

RayWhite®

TOUMA TAYLOR



**Elevated north-facing first home or
investment**

18/244-246 William Street, Potts Point

1 bed 1 bath

Sold



LEVEL 5



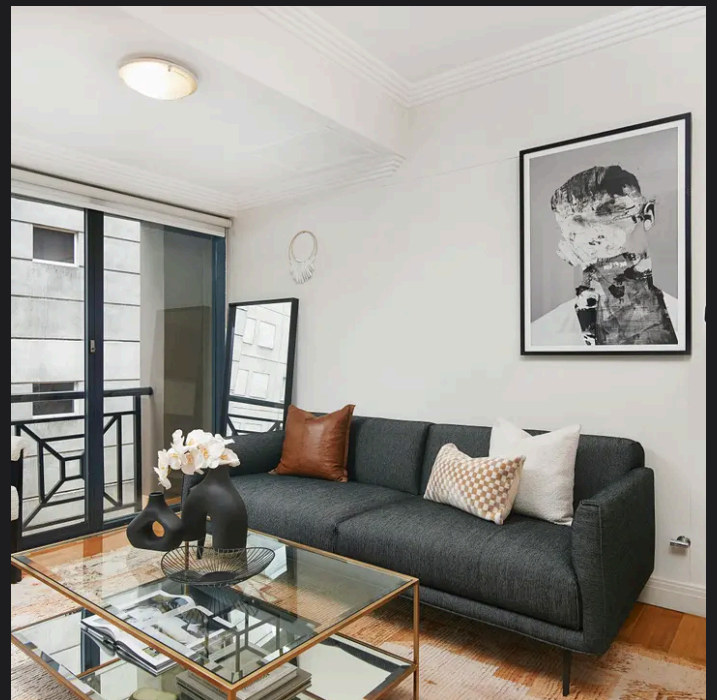
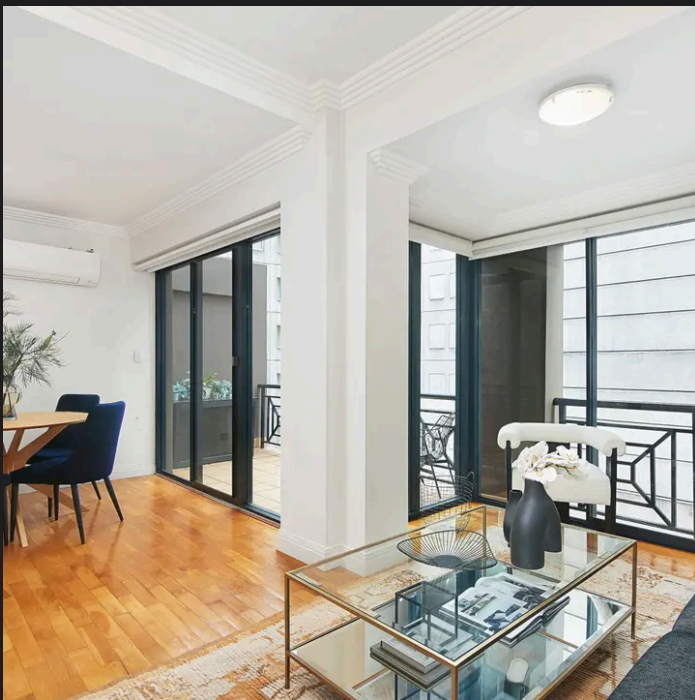
18/246 WILLIAM ST,
POTTS POINT
RAY WHITE TAYLOR & PARTNERS

1 Bedroom, 1 Bathroom



RayWhite.

PLEASE NOTE: WHILST WHITE RAY TAKES EVERY CARE IN PURSUIT OF ACCURACY, THE PLAN IS SHOWN FOR GENERAL GUIDANCE ONLY. ALL MEASUREMENTS AND DISTANCES ARE APPROXIMATE AND NOT SCALE. RAY WHITE AND OUR VENDOR WILL ACCEPT NO RESPONSIBILITIES FOR ITS ACCURACY. INTERESTED PARTIES ARE ADVICE TO MAKE THEIR OWN INDEPENDENT ENQUIRIES.



Walter Burfitt-Williams 0402 833 566
walter.bw@raywhite.com

Dalton Stewart 0458 668 119
dalton.stewart@raywhite.com

Disclaimer: All information provided is sourced from what we believe to be reliable sources. However, we do not guarantee its accuracy, and interested parties should conduct their own enquiries. Scale in metres. Indicative only. Dimensions are approximate.