

RayWhite[®]

TOUMA TAYLOR

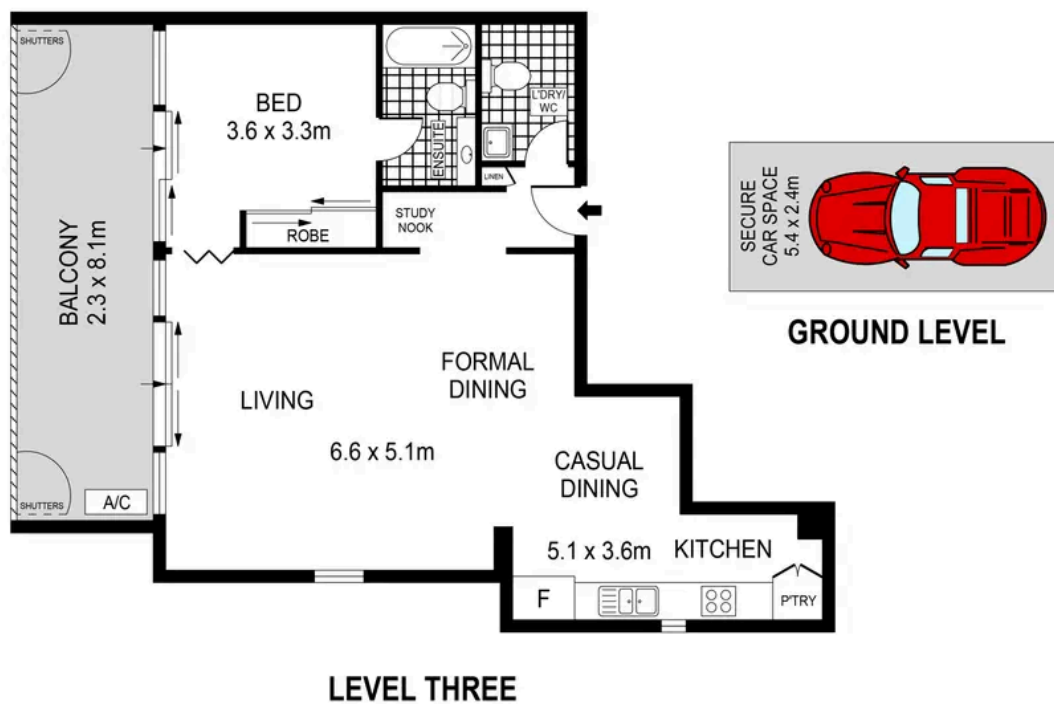


**Oversized north facing apartment with
superb city views**

18/37 Morley Avenue, Rosebery

1 bed 1 bath 1 car

Sold



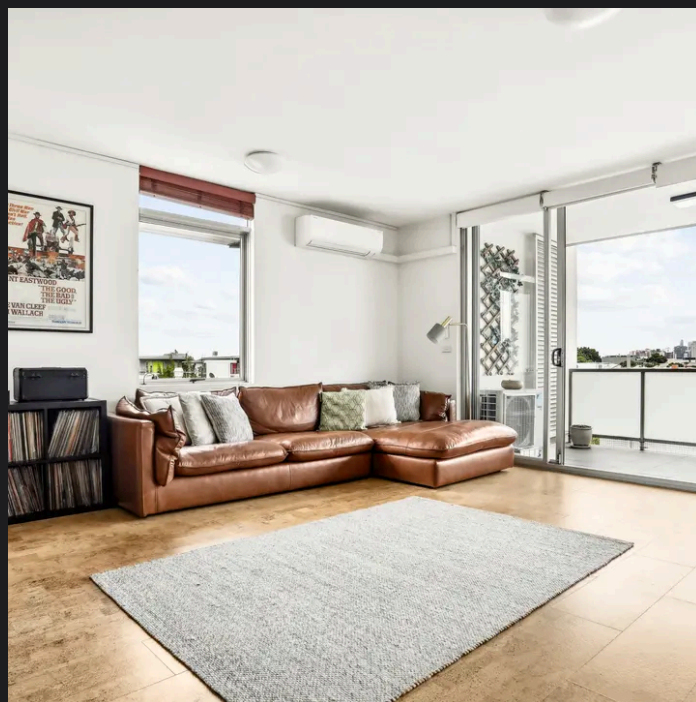
0 1 2 3 4 5 SCALE (METRES)

PLANS SHOWN ONLY INDICATIVE OF LAYOUT. DIMENSIONS ARE APPROXIMATE.
Ref. No: 03031



18/37 MORLEY AVENUE

ROSEBERY



Max Klimenko 0425 336 555
max.klimenko@raywhite.com

Dylan Corelli 0458 711 577
dylan.corelli@raywhite.com

Disclaimer: All information provided is sourced from what we believe to be reliable sources. However, we do not guarantee its accuracy, and interested parties should conduct their own enquiries. Scale in metres. Indicative only. Dimensions are approximate.