

RayWhite®

TOUMA TAYLOR

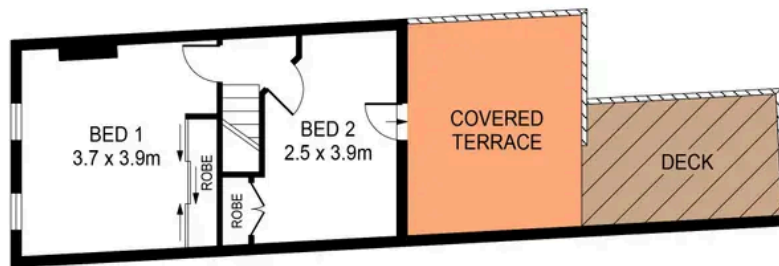


**DA Approved for Outstanding 3 Level
Inner-City Residence**

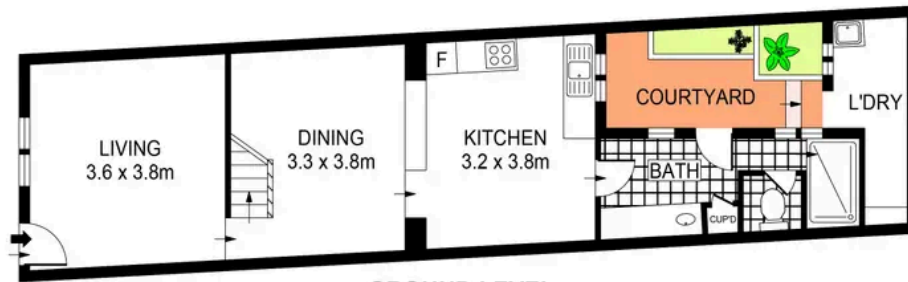
192 Crown Street, Darlinghurst

2 bed 1 bath

Sold



LEVEL ONE



GROUND LEVEL



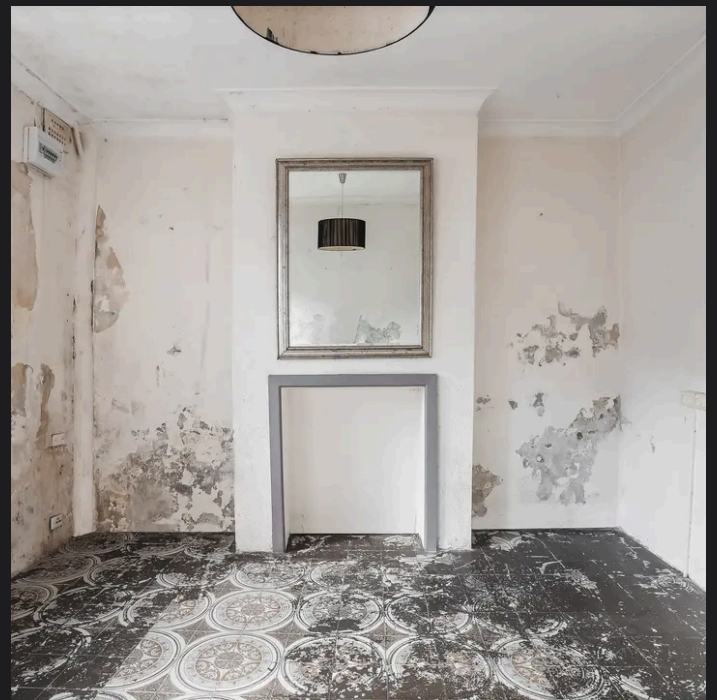
PLANS SHOWN ONLY INDICATIVE OF LAYOUT. DIMENSIONS ARE APPROXIMATE.
Ref. No: 97692

APPROX INTERNAL AREA : 79M2
APPROX EXTERNAL AREA : 27M2
TOTAL SIZE : 106M2



192 CROWN STREET

DARLINGHURST



Charles Touma 0425 305 455
charles.touma@raywhite.com

Cadan Hickey 0404 206 240
cadan_hickey@raywhite.com

Disclaimer: All information provided is sourced from what we believe to be reliable sources. However, we do not guarantee its accuracy, and interested parties should conduct their own enquiries. Scale in metres. Indicative only. Dimensions are approximate.