

RayWhite®

TOUMA TAYLOR

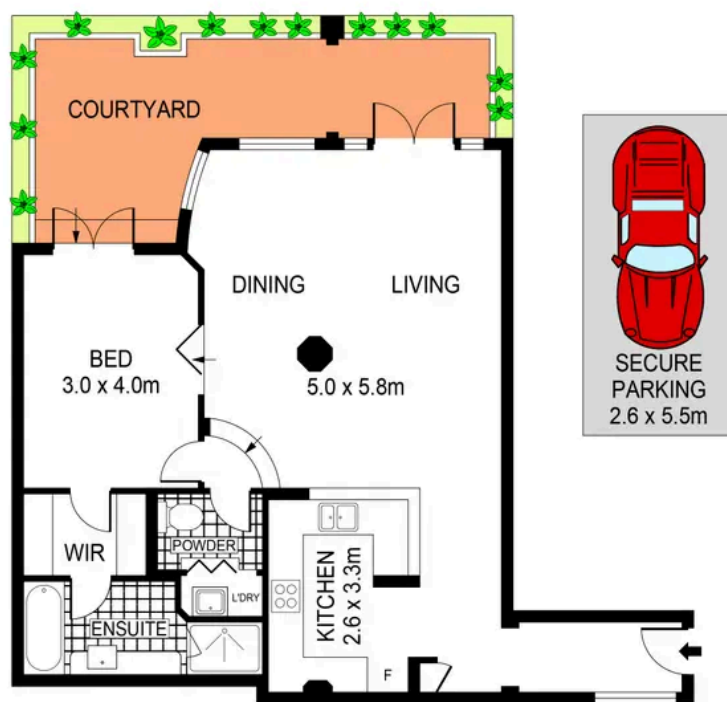


**North-Facing Architecturally Designed Pad
in Boutique Block**

1/99 Marriott Street, Redfern

1 bed 1 bath 1 car

Sold



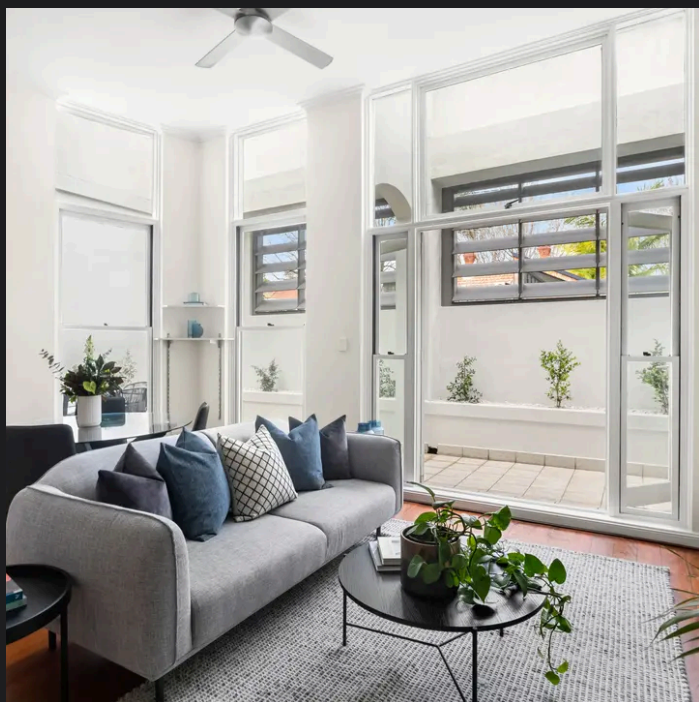
0 1 2 3 4 5 SCALE (METRES)

PLANS SHOWN ONLY INDICATIVE OF LAYOUT. DIMENSIONS ARE APPROXIMATE.
Ref. No: 105026



1/99 MARRIOTT STREET

REDFERN



Charles Tuma 0425 305 455
charles.tuma@raywhite.com

Cadan Hickey 0404 206 240
cadan_hickey@raywhite.com

Disclaimer: All information provided is sourced from what we believe to be reliable sources. However, we do not guarantee its accuracy, and interested parties should conduct their own enquiries. Scale in metres. Indicative only. Dimensions are approximate.