

RayWhite®

TOUMA TAYLOR

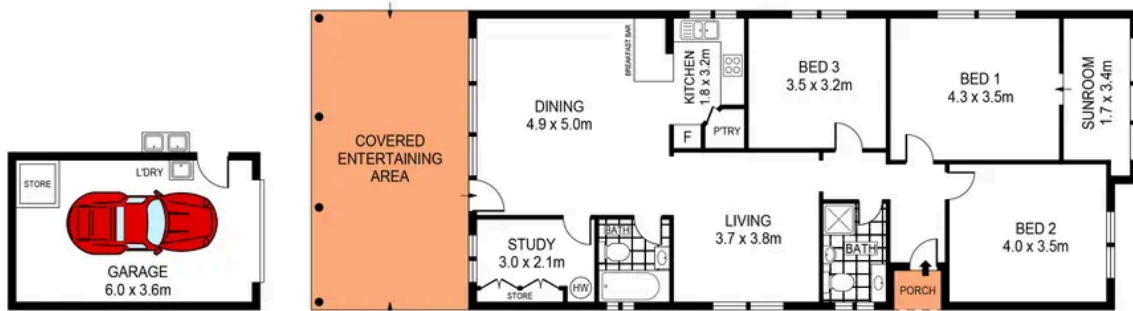
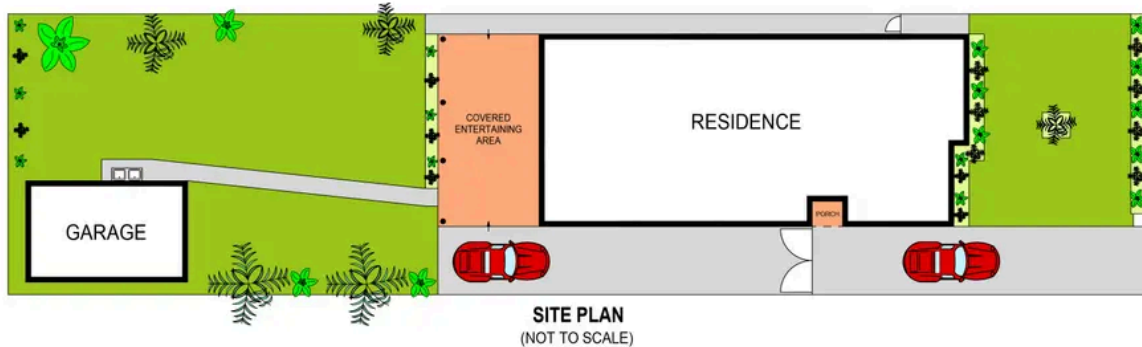


Cherished Family Home on Premium Block

2 Morley Avenue, Rosebery

3 bed 2 bath 3 car

Sold



0 1 2 3 4 5
SCALE (METRES)

PLANS SHOWN ONLY INDICATIVE OF LAYOUT. DIMENSIONS ARE APPROXIMATE.
Ref. No: 99615



2 MORLEY AVENUE

ROSEBERY



Roger Wardy 0481 355 493
roger.wardy@raywhite.com

Disclaimer: All information provided is sourced from what we believe to be reliable sources. However, we do not guarantee its accuracy, and interested parties should conduct their own enquiries. Scale in metres. Indicative only. Dimensions are approximate.