

RayWhite®

TOUMA TAYLOR

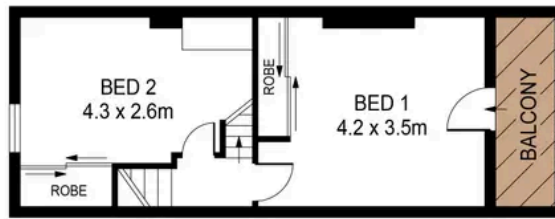


Tightly Held Home On 99sqm Corner Block

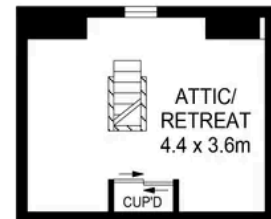
20 Steel Street, Surry Hills

3 bed 1 bath

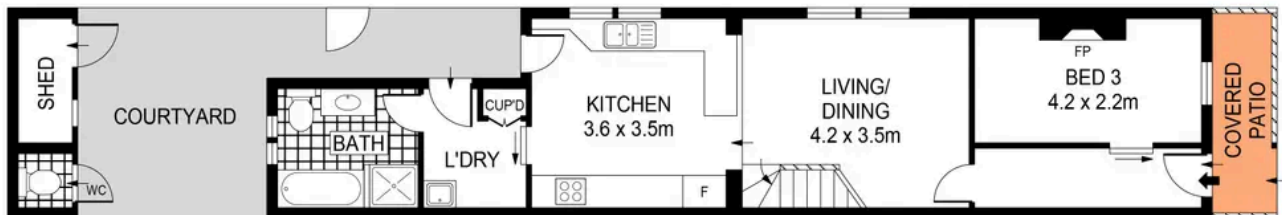
Sold



LEVEL TWO



ATTIC



GROUND LEVEL



PLANS SHOWN ONLY INDICATIVE OF LAYOUT. DIMENSIONS ARE APPROXIMATE.
Ref. No: 96804



Land Size 99sqm **RoyWhite**

20 STEEL STREET

SURRY HILLS



Hayden Richards 0414 872 784
hayden.richards@raywhite.com

Charles Tuma 0425 305 455
charles.tuma@raywhite.com

Disclaimer: All information provided is sourced from what we believe to be reliable sources. However, we do not guarantee its accuracy, and interested parties should conduct their own enquiries. Scale in metres. Indicative only. Dimensions are approximate.