

RayWhite®

TOUMA TAYLOR

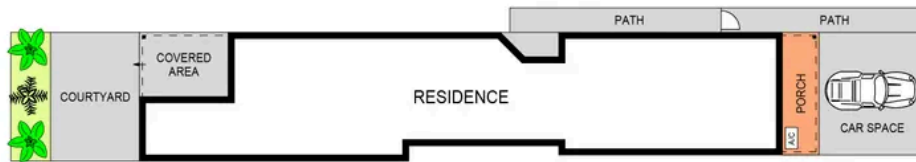


Idyllic North facing lifestyle sanctuary in a peaceful village setting

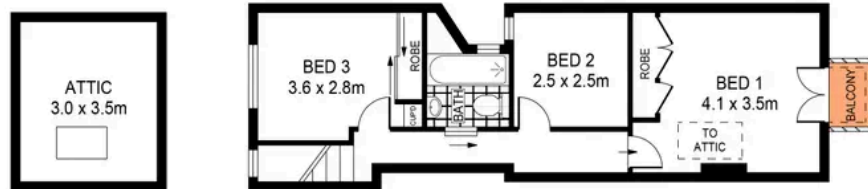
20 Turner Street, Redfern

4 bed 2 bath 1 car

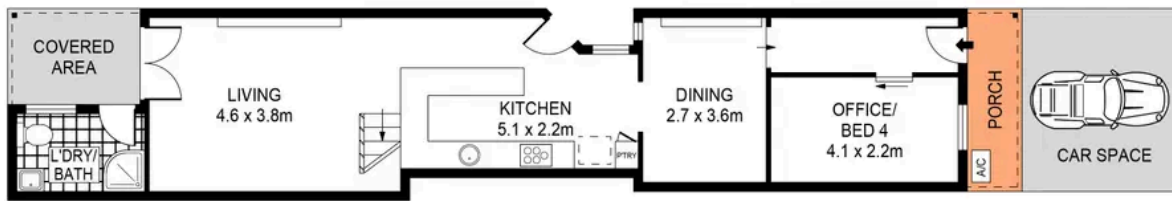
Sold



SITE PLAN
(NOT TO SCALE)



GROUND FLOOR



GROUND FLOOR



0 1 2 3 4 5
SCALE (METRES)

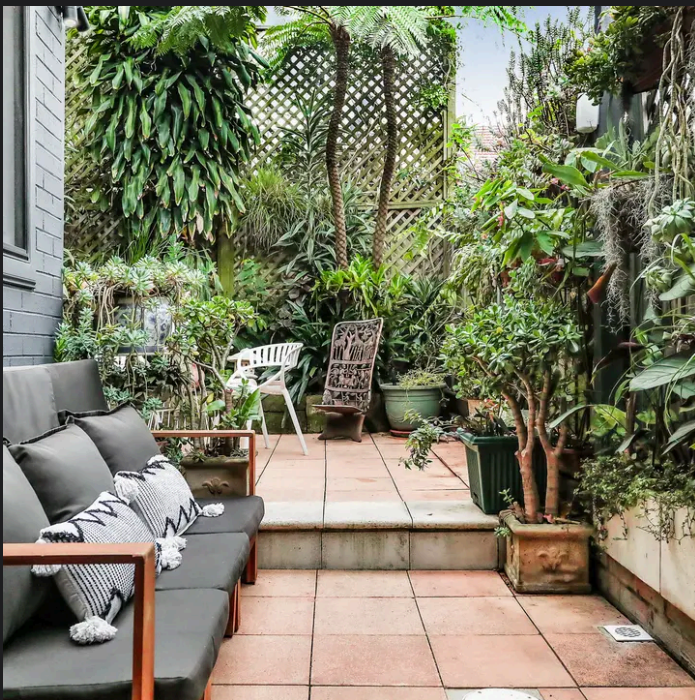
PLANS SHOWN ONLY INDICATIVE OF LAYOUT. DIMENSIONS ARE APPROXIMATE.
Ref. No: 90363

LAND SIZE : 126m²

RayWhite

20 TURNER STREET

REDFERN



Charles Touma 0425 305 455
charles.touma@raywhite.com

Hayden Richards 0414 872 784
hayden.richards@raywhite.com

Disclaimer: All information provided is sourced from what we believe to be reliable sources. However, we do not guarantee its accuracy, and interested parties should conduct their own enquiries. Scale in metres. Indicative only. Dimensions are approximate.