

# RayWhite®

TOUMA TAYLOR

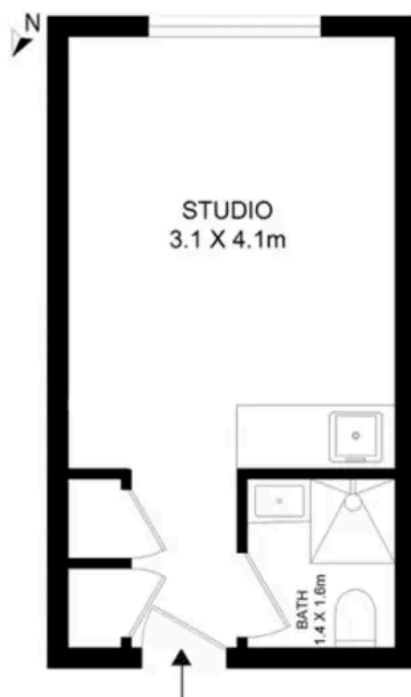


**Perfect City Fringe Pad / Investment  
(Current rent \$460pw)**

202/1-9 Meagher Street, Chippendale

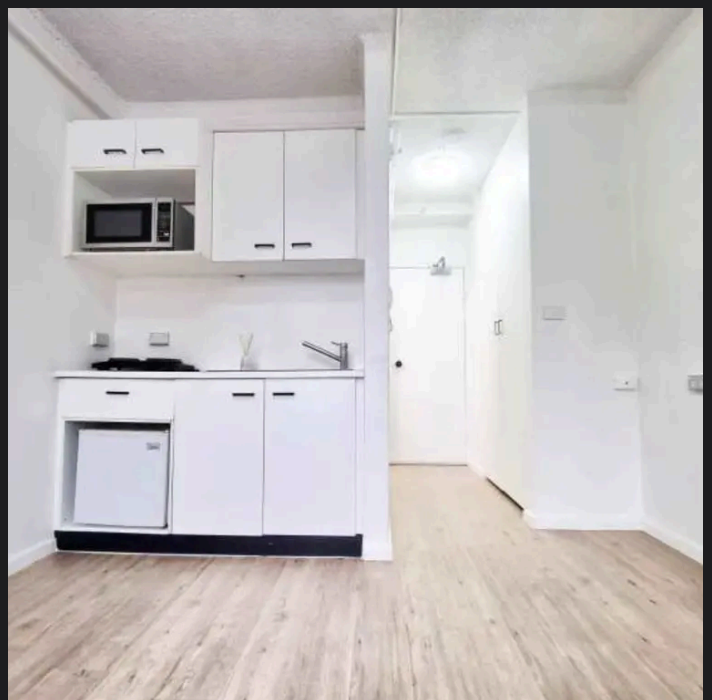
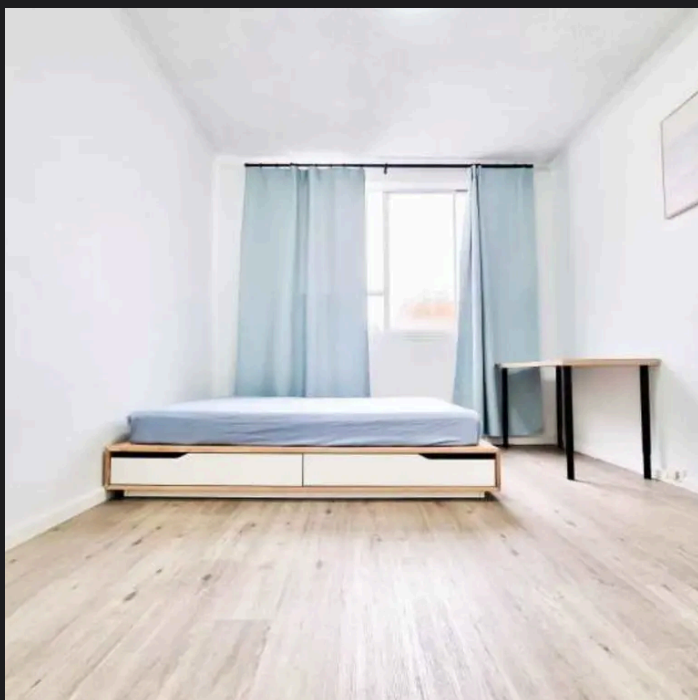
1 bath 2 car

**Sold**



Car Space

202 /1-9 Meagher Street



**Con Fotaras 0411 648 458**  
[con.fotaras@raywhite.com](mailto:con.fotaras@raywhite.com)

**Disclaimer:** All information provided is sourced from what we believe to be reliable sources. However, we do not guarantee its accuracy, and interested parties should conduct their own enquiries. Scale in metres. Indicative only. Dimensions are approximate.