

RayWhite®

TOUMA TAYLOR

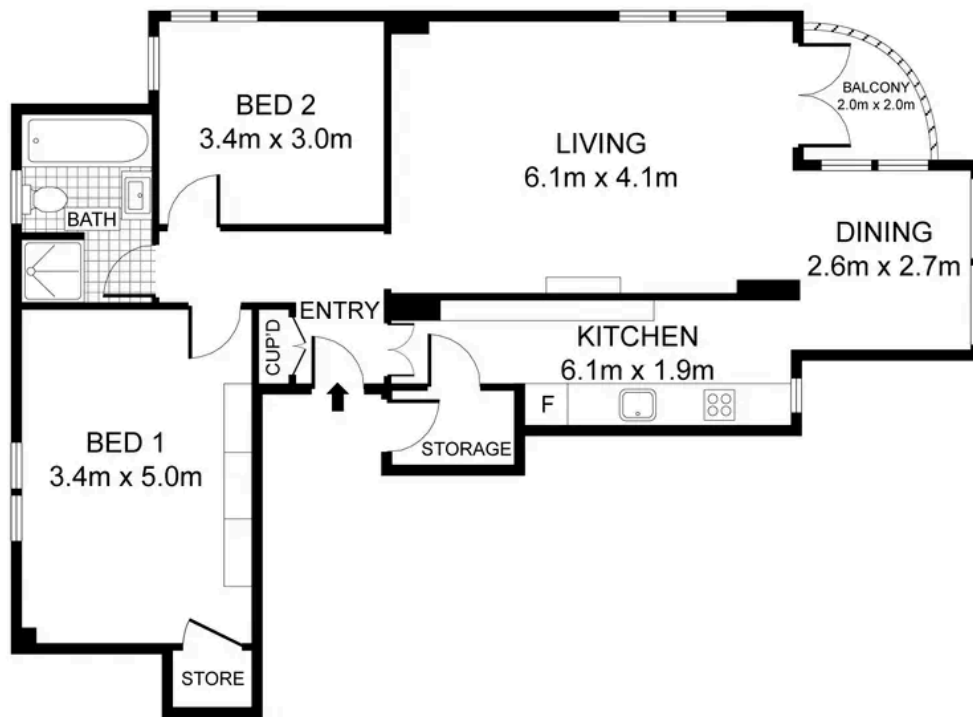


Glorious views, sunlit style, iconic address

206/12 Macleay Street, Potts Point

2 bed 1 bath

Sold



0 1 2 3 4

206/12 MACLEAY STREET
POTTS POINT
RAY WHITE TAYLOR & PARTNERS

PLEASE NOTE: WHILST RAY WHITE TAKES EVERY CARE IN THE PURSUIT OF ACCURACY, THE PLAN IS SHOWN FOR GENERAL GUIDANCE ONLY. ALL AREAS, MEASUREMENTS AND DISTANCES ARE APPROXIMATE AND NOT TO SCALE RAY WHITE AND OUR VENDOR WILL ACCEPT NO RESPONSIBILITY FOR ITS ACCURACY. INTERESTED PARTIES ARE ADVISED TO MAKE THEIR OWN INDEPENDENT ENQUIRIES

2 Bedroom, 1 Bathroom

Internal area (approx.) 97sqm
Total area (approx.) 100sqm



RayWhite.



Disclaimer: All information provided is sourced from what we believe to be reliable sources. However, we do not guarantee its accuracy, and interested parties should conduct their own enquiries. Scale in metres. Indicative only. Dimensions are approximate.