

RayWhite®

TOUMA TAYLOR

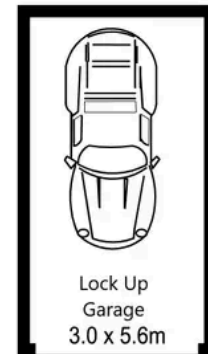


**Ideal Size & Position in Renowned Lifestyle
Estate**

20/83-93 Dalmeny Avenue, Rosebery

3 bed 2 bath 1 car

Sold



0 1 2 3 4 5 SCALE (METRES)

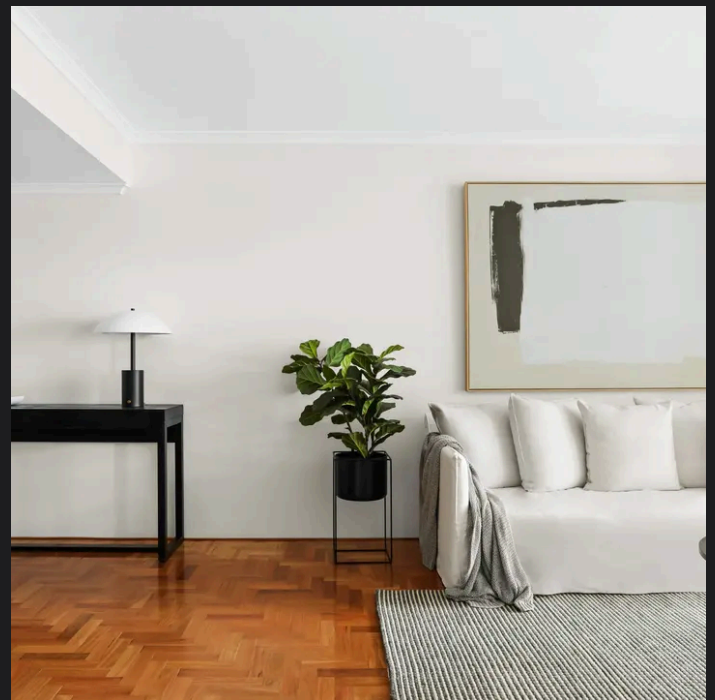
PLANS SHOWN ONLY INDICATIVE OF LAYOUT. DIMENSIONS ARE APPROXIMATE.
Ref. No: 103574

APPROX UNIT SIZE: 129sqm
APPROX LOCK UP GARAGE: 16sqm



20/83-93 DALMENY AVENUE

ROSEBERY



Max Klimenko 0425 336 555
max.klimenko@raywhite.com

Disclaimer: All information provided is sourced from what we believe to be reliable sources. However, we do not guarantee its accuracy, and interested parties should conduct their own enquiries. Scale in metres. Indicative only. Dimensions are approximate.