

# **RayWhite®**

TOUMA TAYLOR

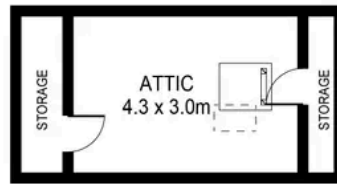


**Lifestyle Pad with Immense Buyer &  
Investor Appeal**

21 Brumby Street, Surry Hills

2 bed 2 bath

**Sold**



ATTIC



LEVEL TWO



LEVEL ONE

0 1 2 3 4 5  
SCALE (METRES)

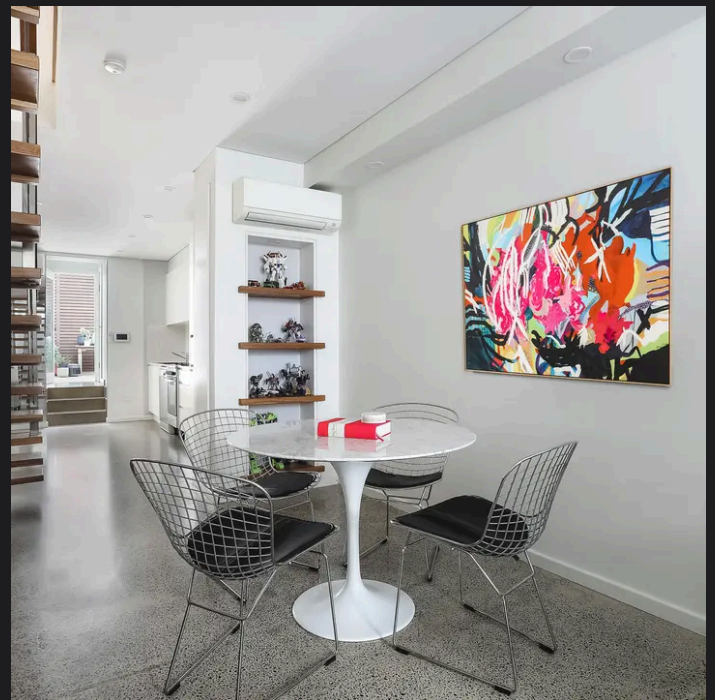
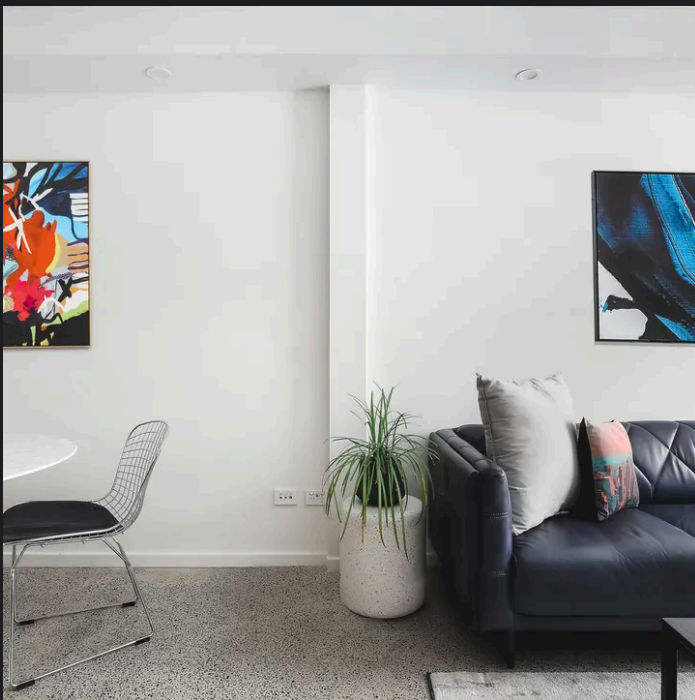
PLANS SHOWN ONLY INDICATIVE OF LAYOUT. DIMENSIONS ARE APPROXIMATE.  
Ref. No: 100300

APPROX. INTERNAL AREA : 95m<sup>2</sup>  
APPROX. EXTERNAL AREA : 15m<sup>2</sup>



21 BRUMBY STREET

SURRY HILLS



**Charles Tuma 0425 305 455**  
charles.tuma@raywhite.com

**Hayden Richards 0414 872 784**  
hayden.richards@raywhite.com

**Disclaimer:** All information provided is sourced from what we believe to be reliable sources. However, we do not guarantee its accuracy, and interested parties should conduct their own enquiries. Scale in metres. Indicative only. Dimensions are approximate.