

RayWhite®

TOUMA TAYLOR

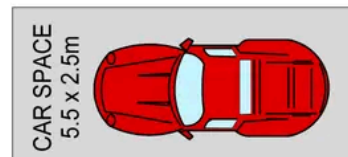


**Brilliant Apartment in Supreme Corner
Setting**

211/97 Dalmeny Avenue, Rosebery

2 bed 2 bath 1 car

Sold



BASEMENT

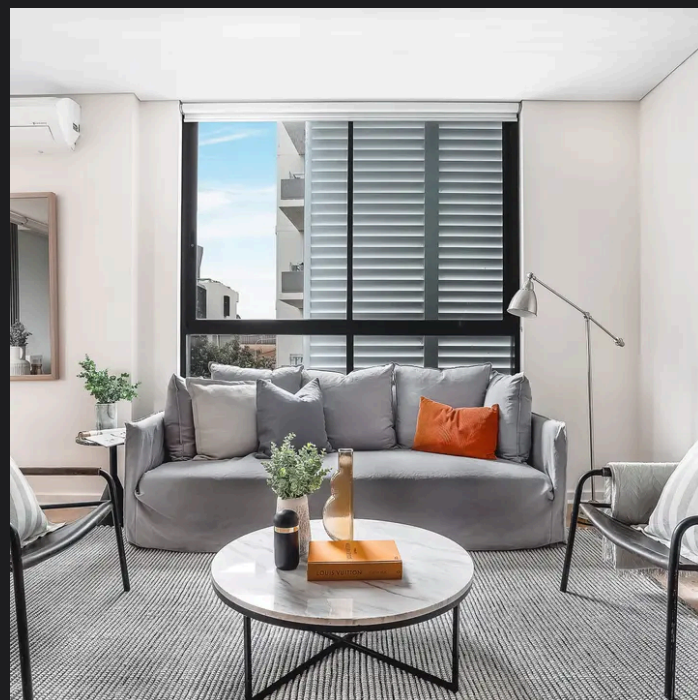
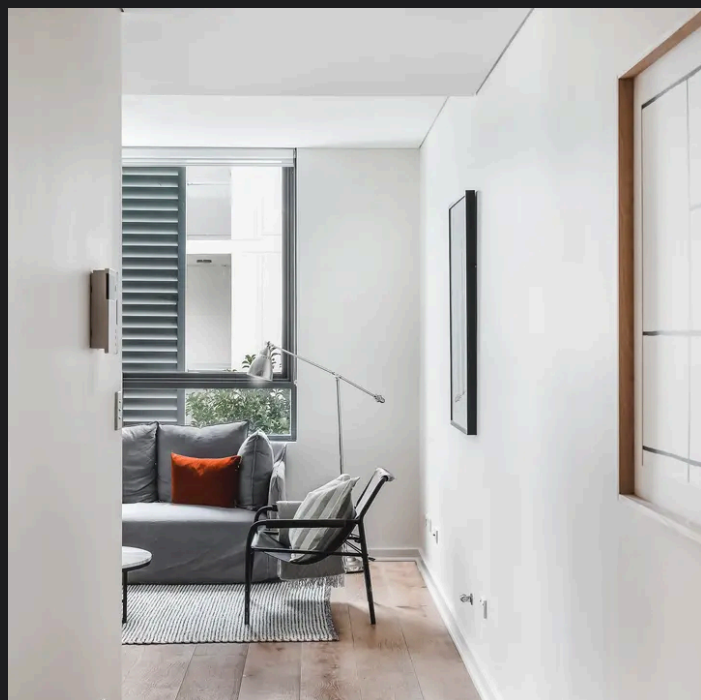
0 1 2 3 4 5 **SCALE (METRES)**

PLANS SHOWN ONLY INDICATIVE OF LAYOUT. DIMENSIONS ARE APPROXIMATE.
Ref. No: 96635



211/97 DALMENY AVENUE

ROSEBERY



Max Klimenko 0425 336 555
max.klimenko@raywhite.com

Disclaimer: All information provided is sourced from what we believe to be reliable sources. However, we do not guarantee its accuracy, and interested parties should conduct their own enquiries. Scale in metres. Indicative only. Dimensions are approximate.