

# RayWhite®

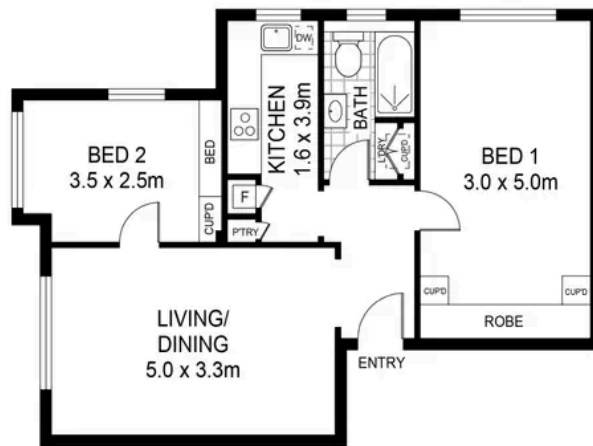
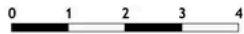
TOUMA TAYLOR



**Charming Art Deco Apartment with  
Harbour Views in Prestigious 'Westchester'  
Building**

21/24-26 Onslow Avenue, Elizabeth Bay

2 bed 1 bath



**LEVEL  
FOUR**

**21/24-26 ONSLOW AVENUE  
ELIZABETH BAY**

**2 Bedroom, 1 Bath**



PLEASE NOTE: WHILST RAY WHITE TAKES EVERY CARE IN THE PURSUIT OF ACCURACY, THE PLAN IS SHOWN FOR GENERAL GUIDANCE ONLY. ALL AREAS, MEASUREMENTS AND DISTANCES ARE APPROXIMATE AND NOT TO SCALE RAY WHITE AND OUR VENDOR WILL ACCEPT NO RESPONSIBILITY FOR ITS ACCURACY. INTERESTED PARTIES ARE ADVISED TO MAKE THEIR OWN INDEPENDENT ENQUIRIES



**Renee Cross 0413 764 566**  
renee.cross@raywhite.com



**Nickolas Voloshanskyi**  
nickolas.voloshanskyi@raywhite.com

**Disclaimer:** All information provided is sourced from what we believe to be reliable sources. However, we do not guarantee its accuracy, and interested parties should conduct their own enquiries. Scale in metres. Indicative only. Dimensions are approximate.