

RayWhite®

TOUMA TAYLOR

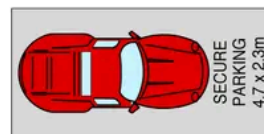
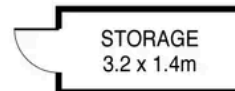
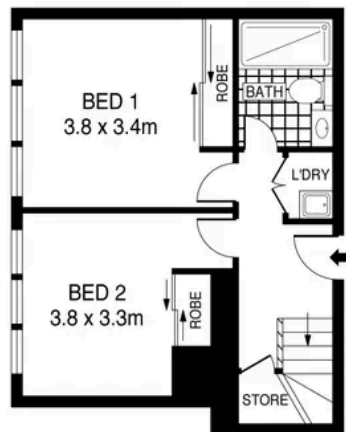
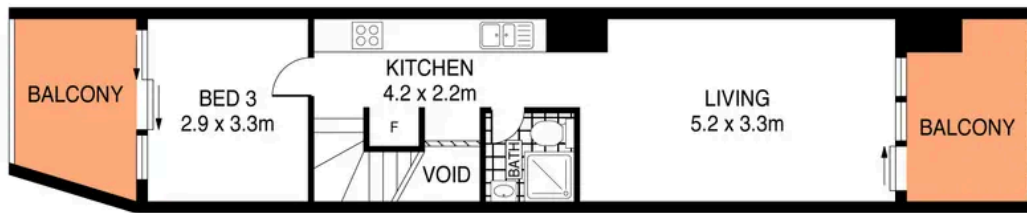


**Boutique Designer Apartment Situated in a
Prime City Fringe Precinct**

212/92-110 Cope Street, Waterloo

3 bed 2 bath 1 car

Sold

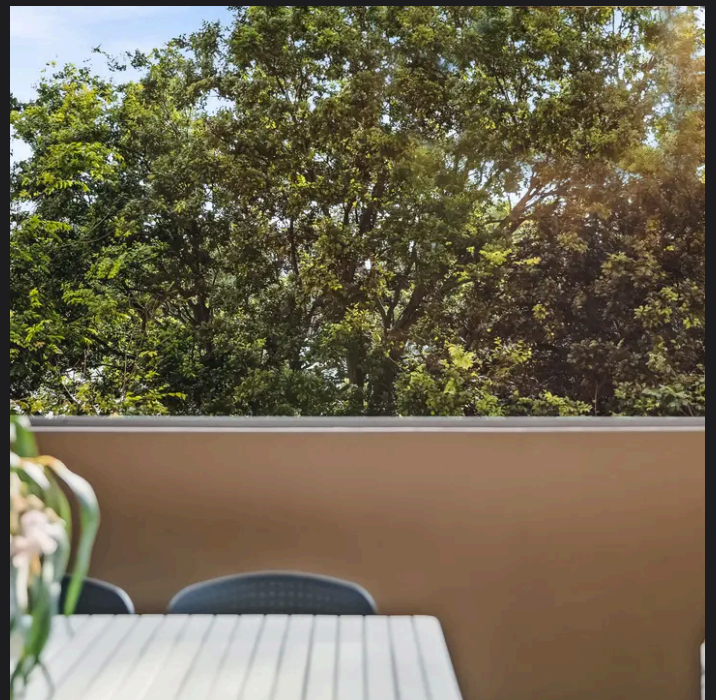


PLANS SHOWN ONLY INDICATIVE OF LAYOUT. DIMENSIONS ARE APPROXIMATE.
Ref. No: 100440



212/92-110 COPE STREET

WATERLOO



Max Klimenko 0425 336 555
max.klimenko@raywhite.com

Disclaimer: All information provided is sourced from what we believe to be reliable sources. However, we do not guarantee its accuracy, and interested parties should conduct their own enquiries. Scale in metres. Indicative only. Dimensions are approximate.