

RayWhite®

TOUMA TAYLOR

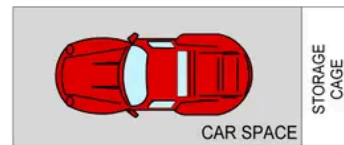


**North-Facing Apartment Upgraded to
Perfection**

2/149 Todman Avenue, Kensington

2 bed 1 bath 1 car

Sold



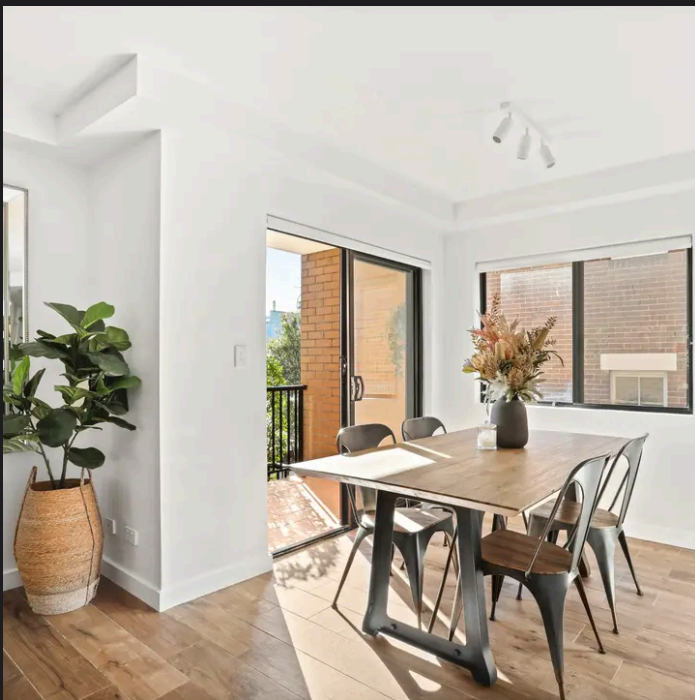
0 1 2 3 4 5
SCALE (METRES)

PLANS SHOWN ONLY INDICATIVE OF LAYOUT. DIMENSIONS ARE APPROXIMATE.
Ref. No. 104861



2/149 TODMAN AVENUE

KENSINGTON



Roger Wardy 0481 355 493
roger.wardy@raywhite.com

Disclaimer: All information provided is sourced from what we believe to be reliable sources. However, we do not guarantee its accuracy, and interested parties should conduct their own enquiries. Scale in metres. Indicative only. Dimensions are approximate.