

RayWhite®

TOUMA TAYLOR



**A Landmark in Luxury Architectural
Masterpiece on the Coogee Border**

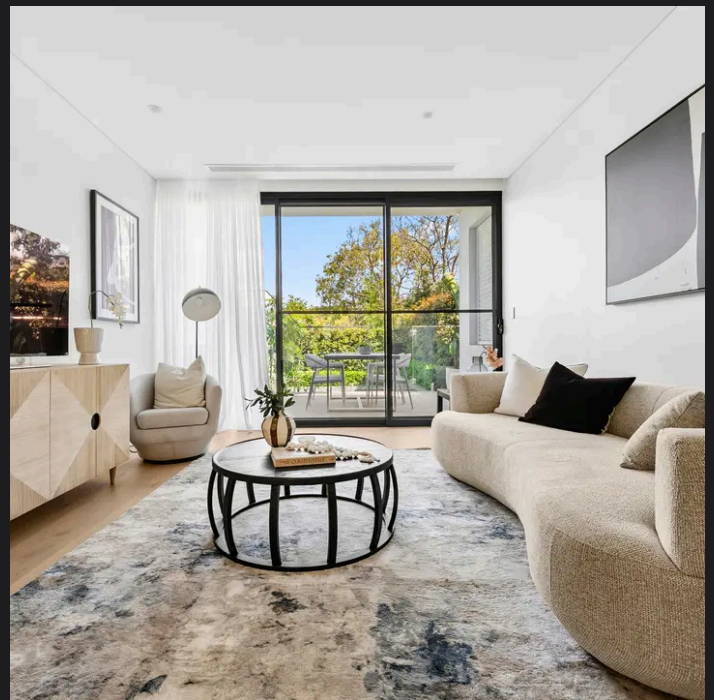
21A Oswald Street, Randwick

4 bed 5 bath 2 car



NOTE: Every precaution has been taken to verify the accuracy of the above details. However, prospective purchasers are advised to make their own enquiries.

21A Oswald Street, Randwick



Roger Wardy 0481 355 493
roger.wardy@raywhite.com

Disclaimer: All information provided is sourced from what we believe to be reliable sources. However, we do not guarantee its accuracy, and interested parties should conduct their own enquiries. Scale in metres. Indicative only. Dimensions are approximate.