

RayWhite®

TOUMA TAYLOR

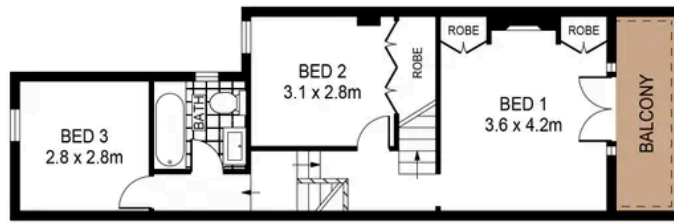


**Grand Scale Victorian Gem in Prime
Location**

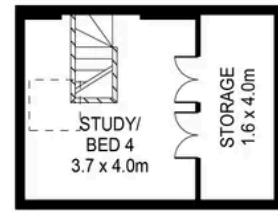
22 Calder Road, Darlington

4 bed 2 bath 1 car

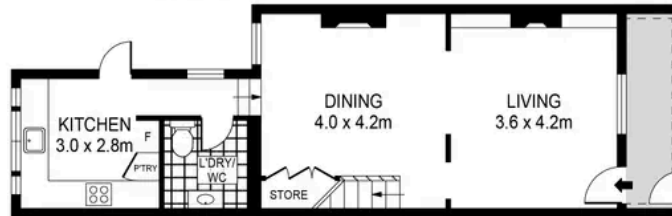
Sold



LEVEL ONE



LEVEL TWO



GROUND LEVEL



SITE PLAN
(NOT TO SCALE)

0 1 2 3 4 5
SCALE (METRES)

PLANS SHOWN ONLY INDICATIVE OF LAYOUT. DIMENSIONS ARE APPROXIMATE.
Ref. No: 109418

APPROX. LAND SIZE : 134m²



22 CALDER ROAD

DARLINGTON



Cadan Hickey 0404 206 240
cadan_hickey@raywhite.com

Hayden Richards 0414 872 784
hayden.richards@raywhite.com

Disclaimer: All information provided is sourced from what we believe to be reliable sources. However, we do not guarantee its accuracy, and interested parties should conduct their own enquiries. Scale in metres. Indicative only. Dimensions are approximate.