

# **RayWhite®**

TOUMA TAYLOR

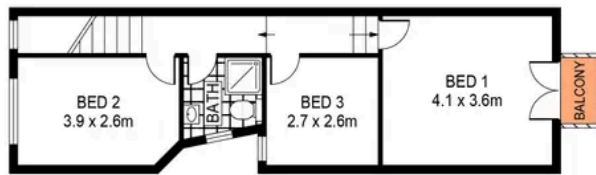


**Refreshed Terrace, N/facing Courtyard in  
Quiet Laneway Row**

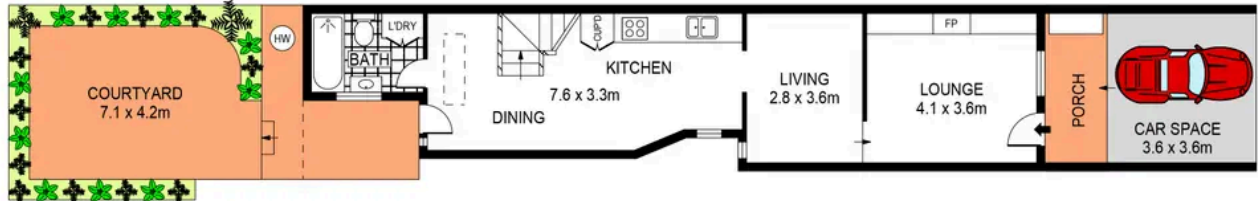
22 Turner Street, Redfern

3 bed 2 bath 1 car

**Sold**



FIRST FLOOR



GROUND FLOOR



SCALE (METRES)

PLANS SHOWN ONLY INDICATIVE OF LAYOUT. DIMENSIONS ARE APPROXIMATE.  
Ref. No: 104853



22 TURNER STREET

REDFERN



**Charles Tuma 0425 305 455**  
charles.tuma@raywhite.com

**Cadan Hickey 0404 206 240**  
cadan\_hickey@raywhite.com

**Disclaimer:** All information provided is sourced from what we believe to be reliable sources. However, we do not guarantee its accuracy, and interested parties should conduct their own enquiries. Scale in metres. Indicative only. Dimensions are approximate.