

# **RayWhite®**

TOUMA TAYLOR

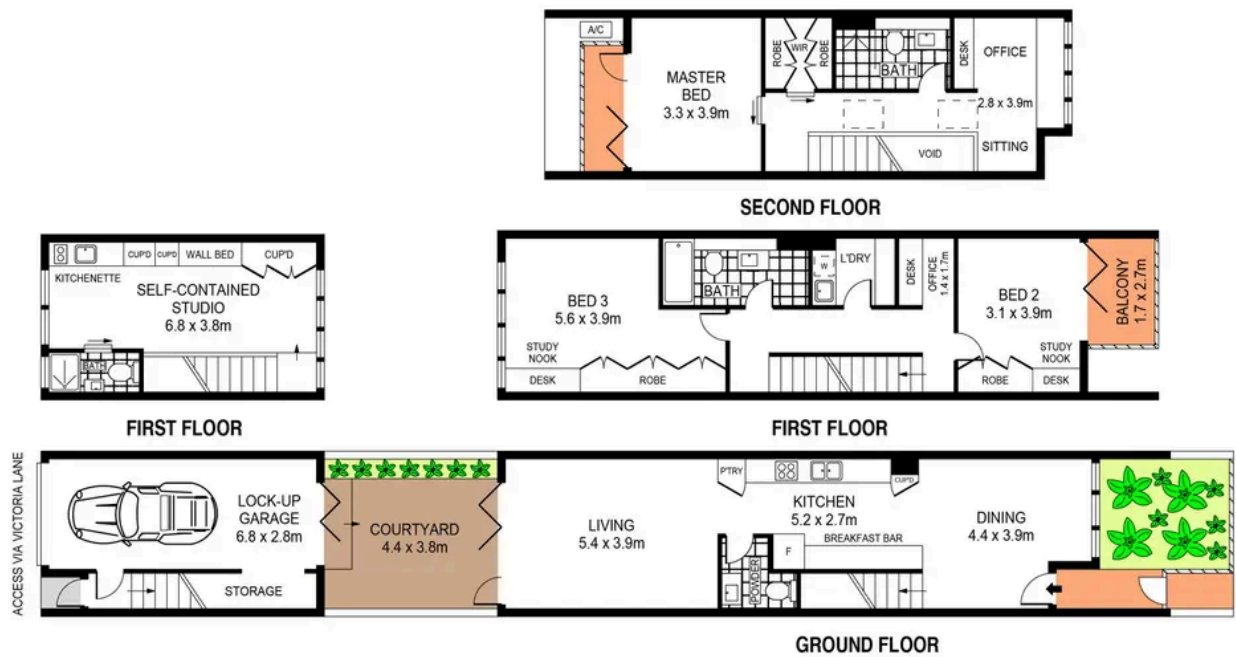


**Tri-Level Showcase of Contemporary  
Design & Elegance**

221A Queen Street, Beaconsfield

4 bed 3 bath 1 car

**Sold**



0 1 2 3 4 5  
SCALE (METRES)

PLANS SHOWN ONLY INDICATIVE OF LAYOUT. DIMENSIONS ARE APPROXIMATE.  
Ref. No: 03597

APPROX. INTERNAL AREA : 205m<sup>2</sup>  
APPROX. EXTERNAL AREA : 26m<sup>2</sup>  
APPROX. TOTAL AREA : 231m<sup>2</sup>



221A QUEEN STREET

BEACONSFIELD



**Max Klimenko 0425 336 555**  
max.klimenko@raywhite.com

**Dylan Corelli 0458 711 577**  
dylan.corelli@raywhite.com

**Disclaimer:** All information provided is sourced from what we believe to be reliable sources. However, we do not guarantee its accuracy, and interested parties should conduct their own enquiries. Scale in metres. Indicative only. Dimensions are approximate.