

RayWhite®

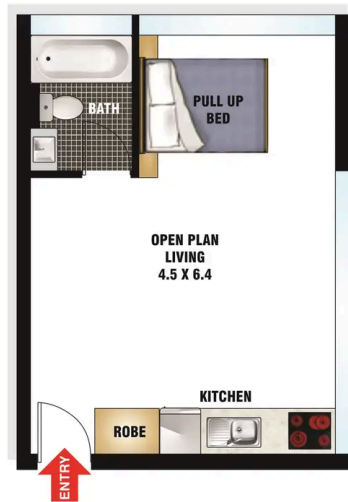
TOUMA TAYLOR



**Harry Seidlers Gemini' - Tranquil and
Immaculate Studio with Scramble Parking**

22/40-44 Victoria Street, Potts Point

1 bath 1 car

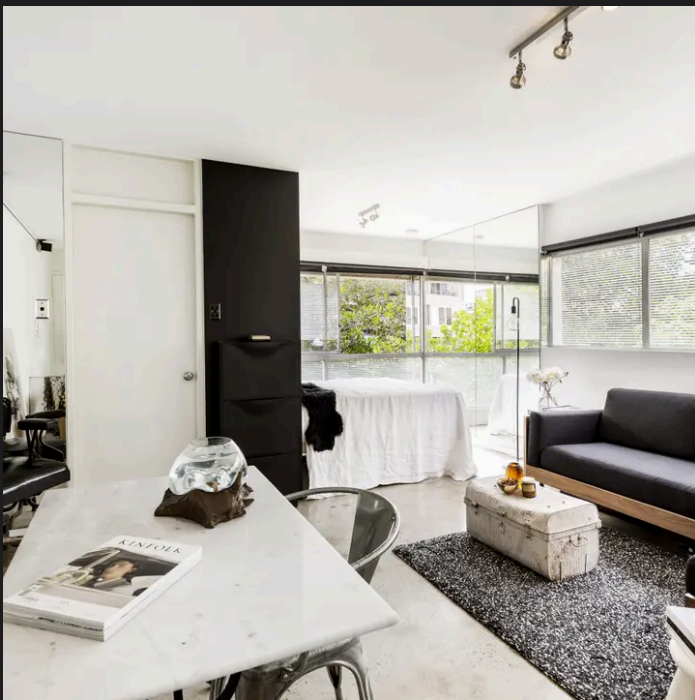


SCRAMBLE PARKING



FLOOR PLAN
22/40 Victoria Street
POTTS POINT

"The information contained herein has been provided by our Principal and third parties, which we merely pass on without any representation or warranty given, intended or implied by us as to its correctness and with no liability accepted by us in this regard. You must rely on your own inquiries as to its accuracy or otherwise."



Renee Cross 0413 764 566
renee.cross@raywhite.com

Nickolas Voloshanskyi
nickolas.voloshanskyi@raywhite.com