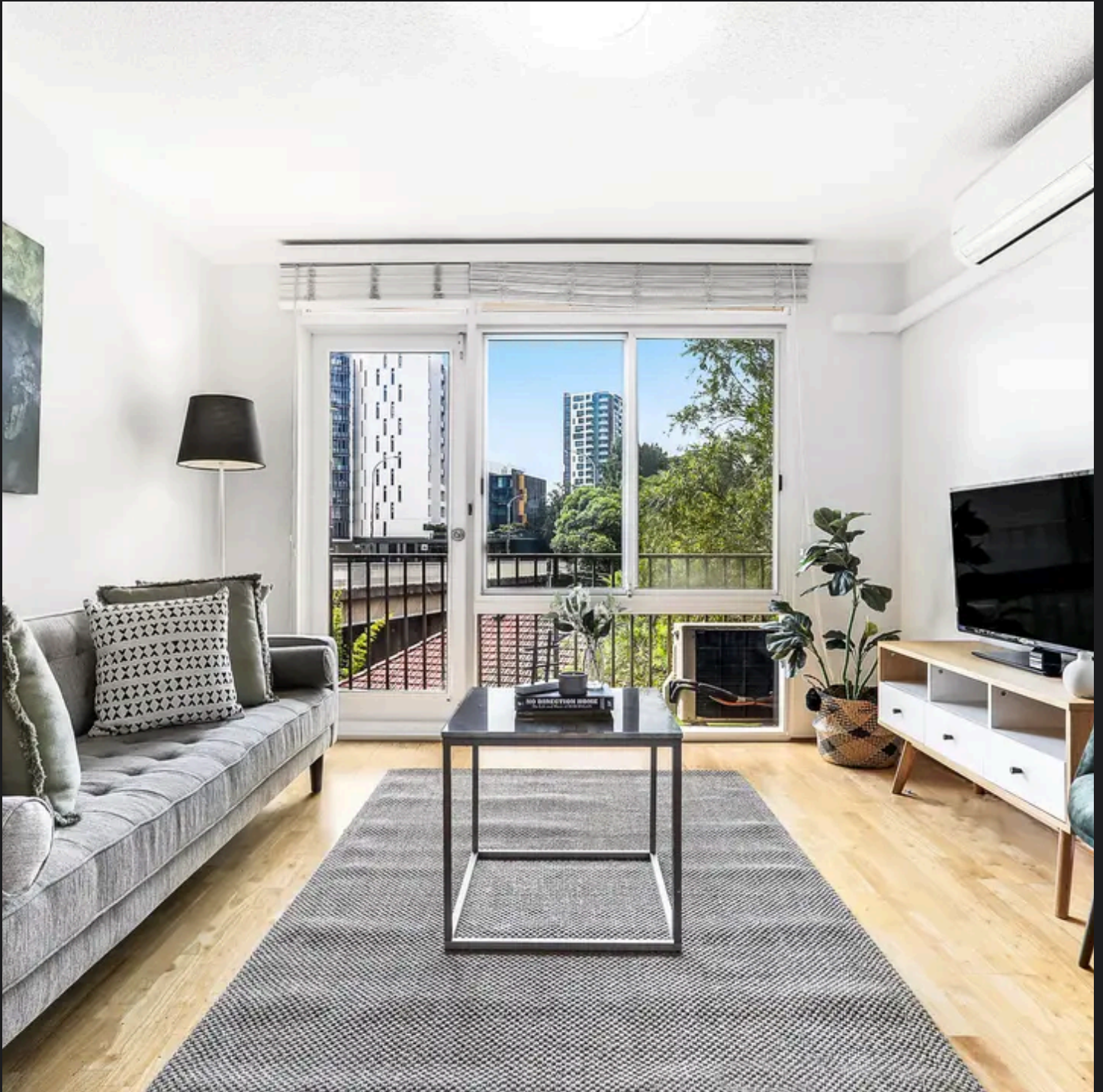


RayWhite®

TOUMA TAYLOR

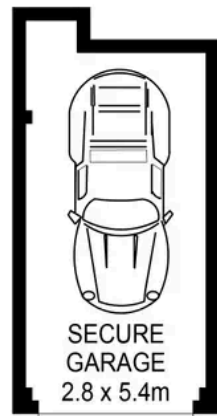


**North-Facing Apartment in Immaculate
Condition**

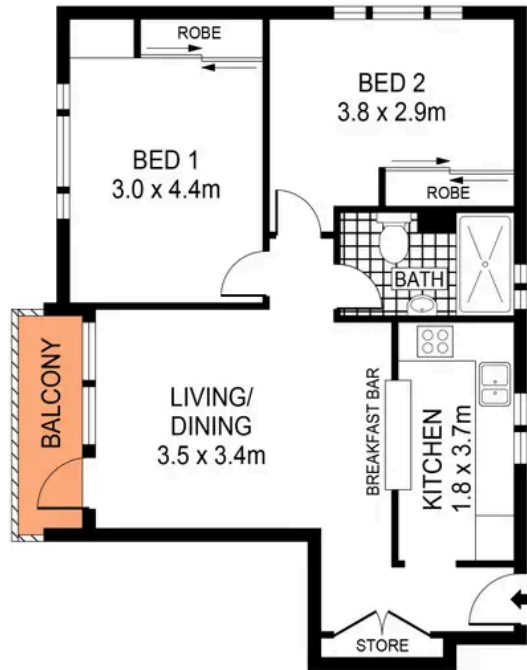
22/76 Lenthall Street, Kensington

2 bed 1 bath 1 car

Sold



GROUND LEVEL



LEVEL THREE

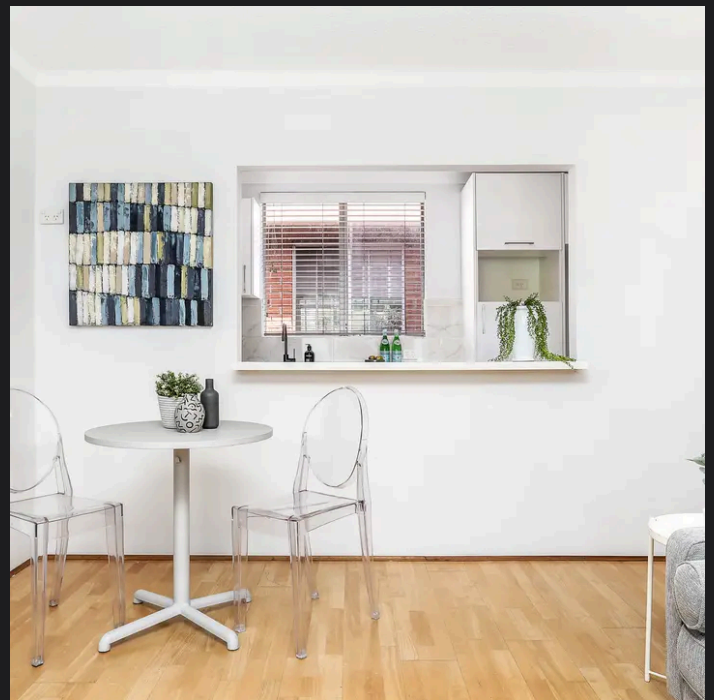


PLANS SHOWN ONLY INDICATIVE OF LAYOUT. DIMENSIONS ARE APPROXIMATE.
Ref. No: 86945



22/76 LENTHALL STREET

KENSINGTON



Max Klimenko 0425 336 555
max.klimenko@raywhite.com

Roger Wardy 0481 355 493
roger.wardy@raywhite.com

Disclaimer: All information provided is sourced from what we believe to be reliable sources. However, we do not guarantee its accuracy, and interested parties should conduct their own enquiries. Scale in metres. Indicative only. Dimensions are approximate.