

RayWhite®

TOUMA TAYLOR

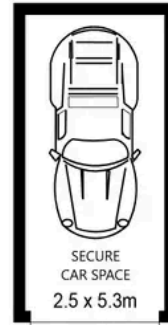
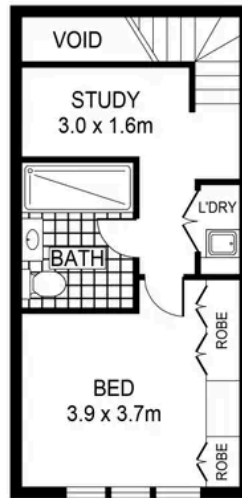
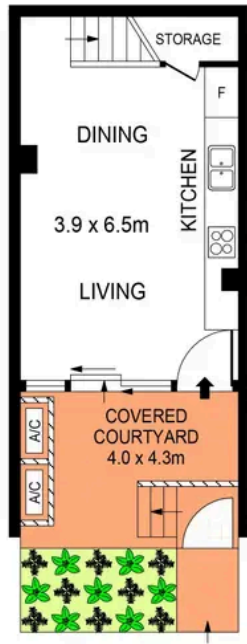


**Townhouse-Style Living on the Doorstep of
South Eveleigh Attractions**

23/27-41 Wyndham Street, Alexandria

1 bed 1 bath 1 car

Sold



PLANS SHOWN ONLY INDICATIVE OF LAYOUT. DIMENSIONS ARE APPROXIMATE.
Ref. No: 03162

APPROX. TOTAL AREA : 89m²



23/27-41 WYNDHAM STREET

ALEXANDRIA



Hayden Richards 0414 872 784
hayden.richards@raywhite.com

Con Fotaras 0411 648 458
con.fotaras@raywhite.com

Disclaimer: All information provided is sourced from what we believe to be reliable sources. However, we do not guarantee its accuracy, and interested parties should conduct their own enquiries. Scale in metres. Indicative only. Dimensions are approximate.