

RayWhite®

TOUMA TAYLOR

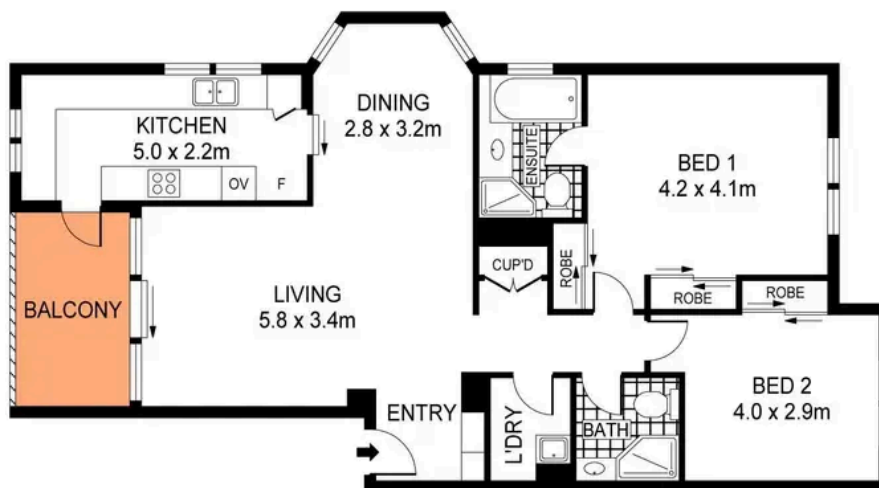
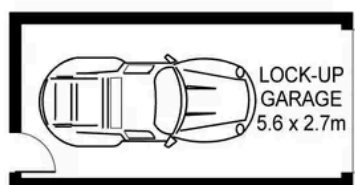


**Stylish North Facing Top Floor 'Raleigh
Park' Apartment**

23/33-59 Brompton Road, Kensington

2 bed 2 bath 1 car

Sold



0 1 2 3
SCALE (METRES)

PLANS SHOWN ONLY INDICATIVE OF LAYOUT. DIMENSIONS ARE APPROXIMATE.
Ref. No: 109335

TOTAL APARTMENT SIZE: 113SQM



23/33 BROMPTON ROAD

KENSINGTON



Roger Wardy 0481 355 493
roger.wardy@raywhite.com

Disclaimer: All information provided is sourced from what we believe to be reliable sources. However, we do not guarantee its accuracy, and interested parties should conduct their own enquiries. Scale in metres. Indicative only. Dimensions are approximate.