

RayWhite®

TOUMA TAYLOR

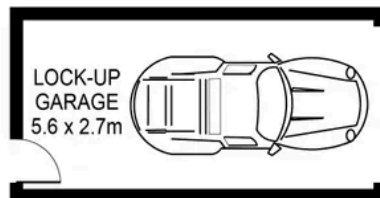
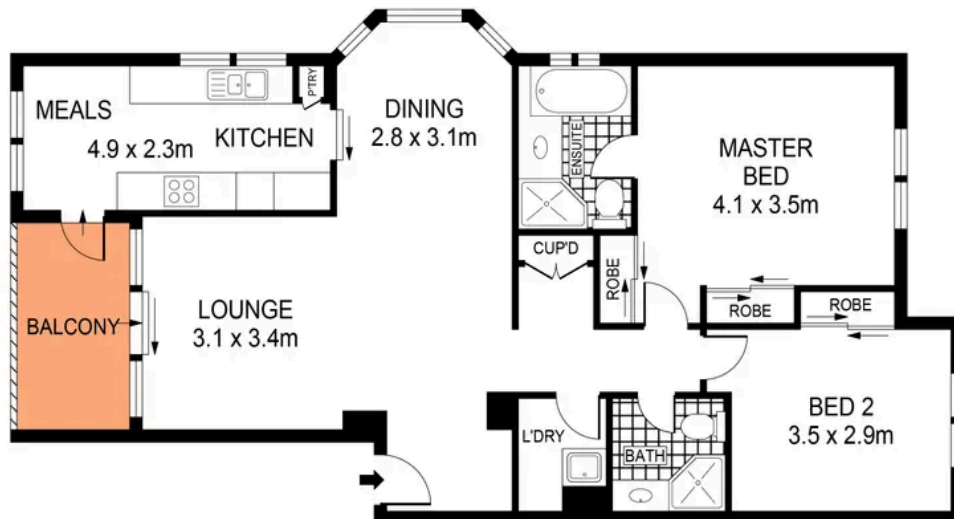


**Sun Filled Top Floor Apartment In Idyllic
'Raleigh Estate'**

23/33-59 Brompton Road, Kensington

2 bed 2 bath 1 car

Sold



0 1 2 3 4 5 SCALE (METRES)

PLANS SHOWN ONLY INDICATIVE OF LAYOUT. DIMENSIONS ARE APPROXIMATE.
Ref. No: 83996



23/33-59 BROMPTON ROAD

KENSINGTON



Roger Wardy 0481 355 493
roger.wardy@raywhite.com

Disclaimer: All information provided is sourced from what we believe to be reliable sources. However, we do not guarantee its accuracy, and interested parties should conduct their own enquiries. Scale in metres. Indicative only. Dimensions are approximate.