

RayWhite®

TOUMA TAYLOR

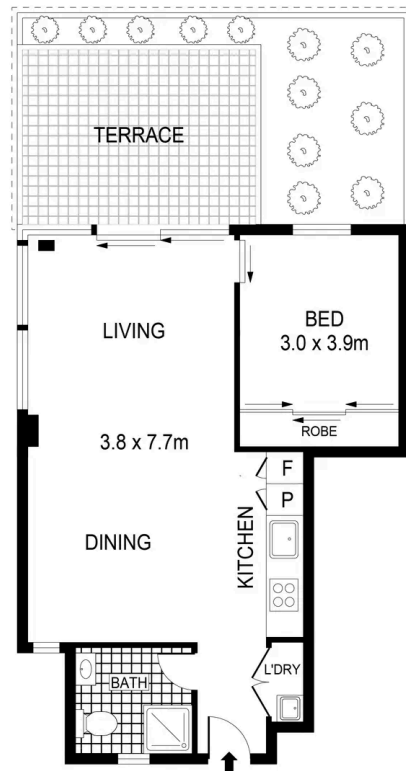


**Chic Inner-City Living in The Exclusive
'Short Lane' Complex**

2/350 Bourke Street, Surry Hills

1 bed 1 bath

Sold



LEVEL ONE

0 1 2 3
SCALE (METRES)

PLANS SHOWN ONLY INDICATIVE OF LAYOUT. DIMENSIONS ARE APPROXIMATE.
REF: NO. 33583

2/350 BOURKE STREET



SURRY HILLS



Con Fotaras 0411 648 458
con.fotaras@raywhite.com

Disclaimer: All information provided is sourced from what we believe to be reliable sources. However, we do not guarantee its accuracy, and interested parties should conduct their own enquiries. Scale in metres. Indicative only. Dimensions are approximate.