

RayWhite®

TOUMA TAYLOR

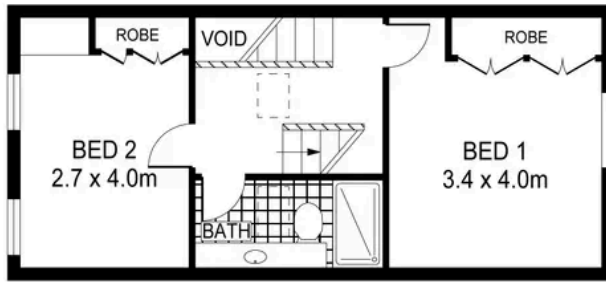


**Sleek Urban Terrace with Sunny Courtyard
in Prime Pocket**

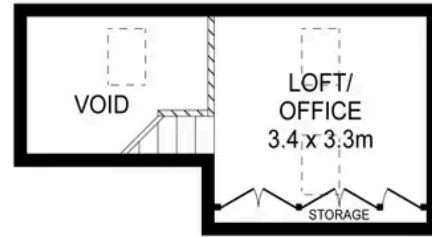
26 Walker Street, Redfern

2 bed 1 bath

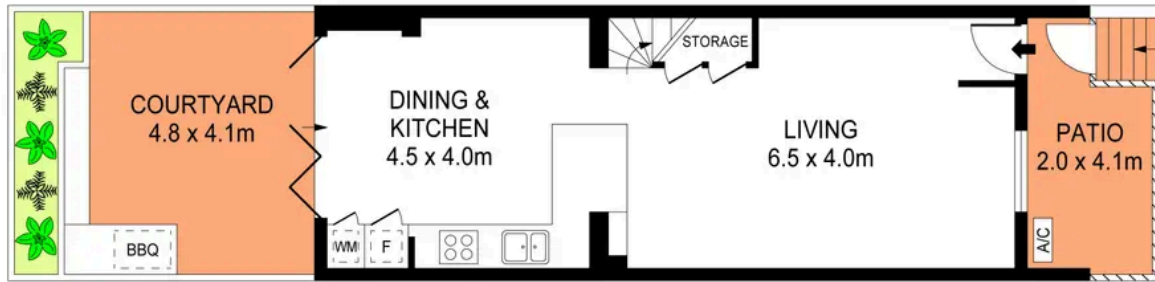
Sold



FIRST FLOOR



LOFT



GROUND FLOOR

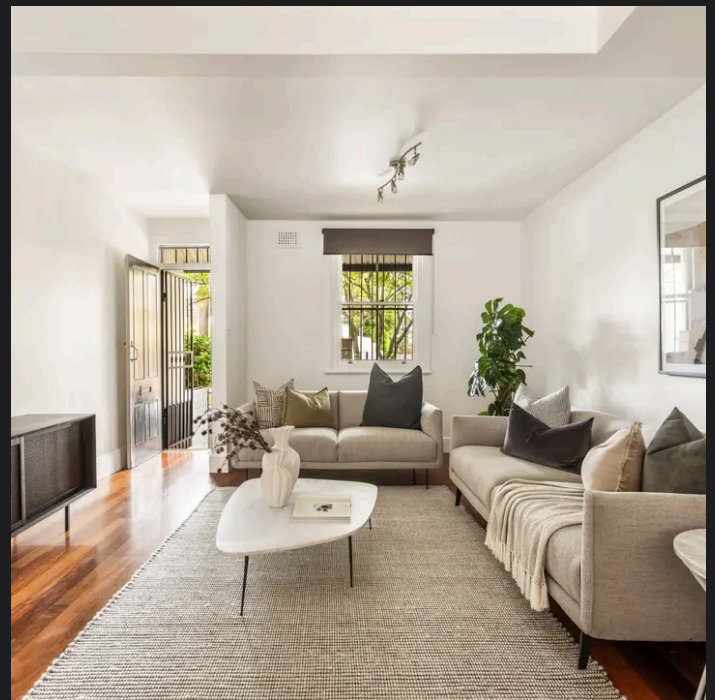
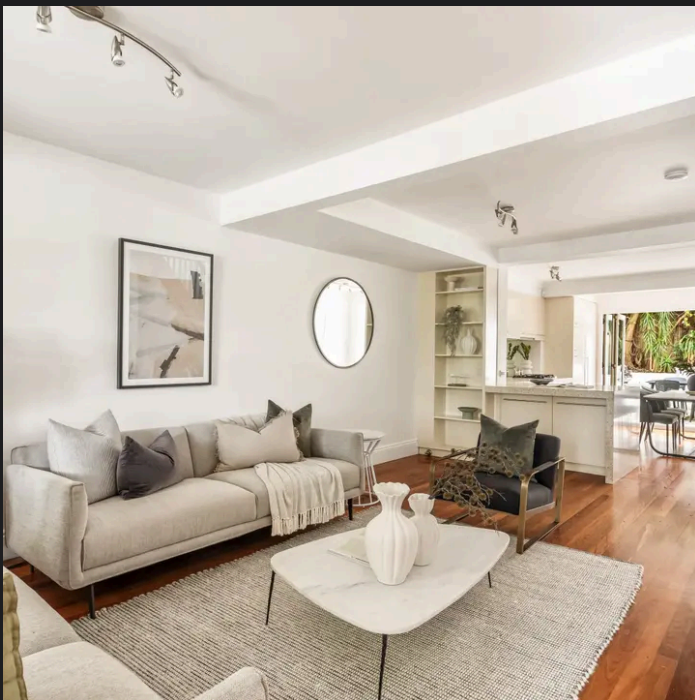


PLANS SHOWN ONLY INDICATIVE OF LAYOUT. DIMENSIONS ARE APPROXIMATE.
Ref. No. 02811



26 WALKER STREET

REDFERN



Charles Touma 0425 305 455
charles.touma@raywhite.com

Cadan Hickey 0404 206 240
cadan_hickey@raywhite.com

Disclaimer: All information provided is sourced from what we believe to be reliable sources. However, we do not guarantee its accuracy, and interested parties should conduct their own enquiries. Scale in metres. Indicative only. Dimensions are approximate.