

RayWhite®

TOUMA TAYLOR

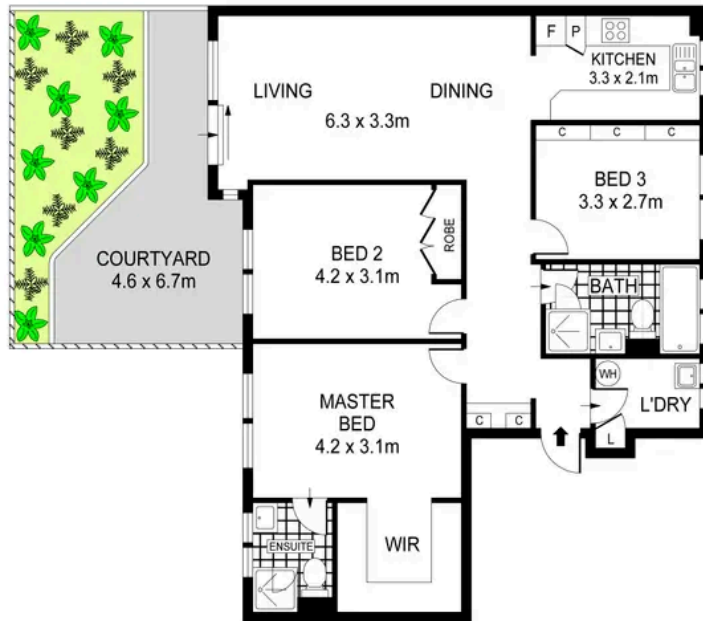


**Private courtyard residence in a prime
harbourside complex**

26/10 Gow Street, Balmain

3 bed 2 bath 2 car

Sold



LEVEL ONE

LEVEL THREE - STREET LEVEL

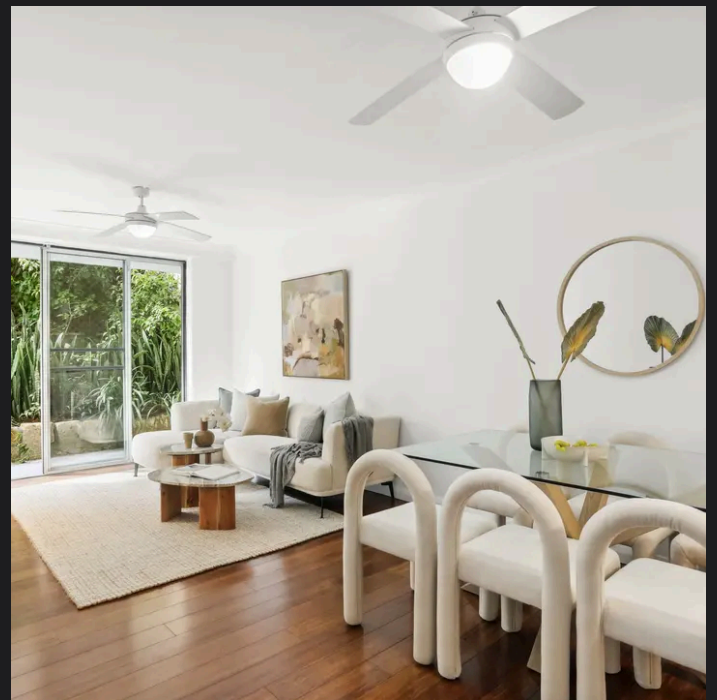


PLANS SHOWN ONLY INDICATIVE OF LAYOUT. DIMENSIONS ARE APPROXIMATE.
Ref. No. 05765



26/10 GOW STREET

BALMAIN



Walter Burfitt-Williams 0402 833 566
walter.bw@raywhite.com

Dalton Stewart 0458 668 119
dalton.stewart@raywhite.com

Disclaimer: All information provided is sourced from what we believe to be reliable sources. However, we do not guarantee its accuracy, and interested parties should conduct their own enquiries. Scale in metres. Indicative only. Dimensions are approximate.