

RayWhite®

TOUMA TAYLOR

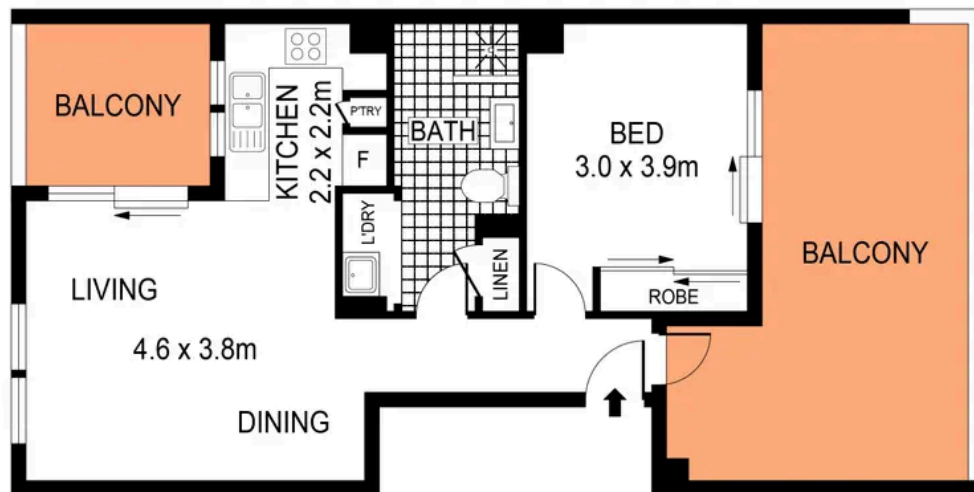


**Brilliant Top-Floor Apartment with Two
Outdoor Retreats**

26/42 Turner Street, Redfern

1 bed 1 bath 1 car

Sold



TOP LEVEL



BASEMENT



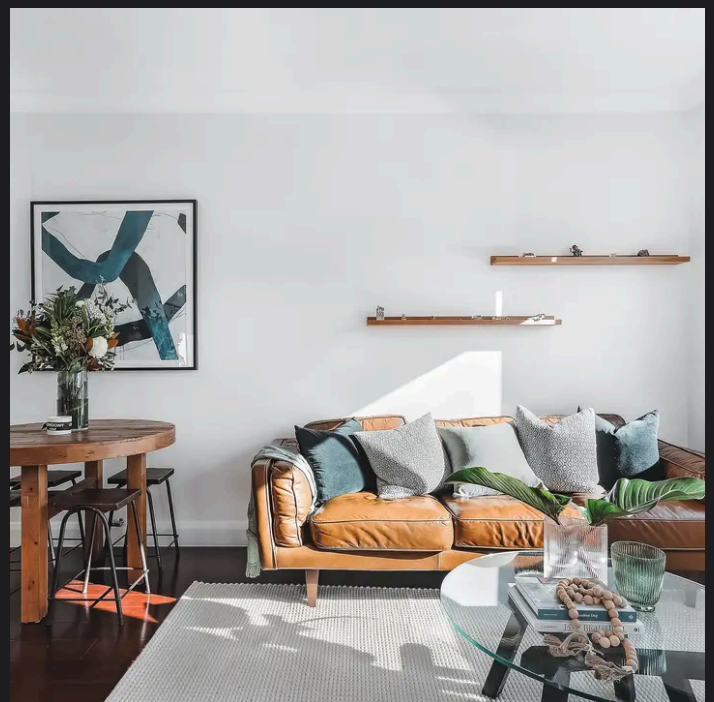
PLANS SHOWN ONLY INDICATIVE OF LAYOUT. DIMENSIONS ARE APPROXIMATE.
Ref. No: 97701



Size - 71sqm
Car space - 14sqm RayWhite

26/42 TURNER STREET

REDFERN



Hayden Richards 0414 872 784
hayden.richards@raywhite.com

Disclaimer: All information provided is sourced from what we believe to be reliable sources. However, we do not guarantee its accuracy, and interested parties should conduct their own enquiries. Scale in metres. Indicative only. Dimensions are approximate.