

# **RayWhite®**

TOUMA TAYLOR

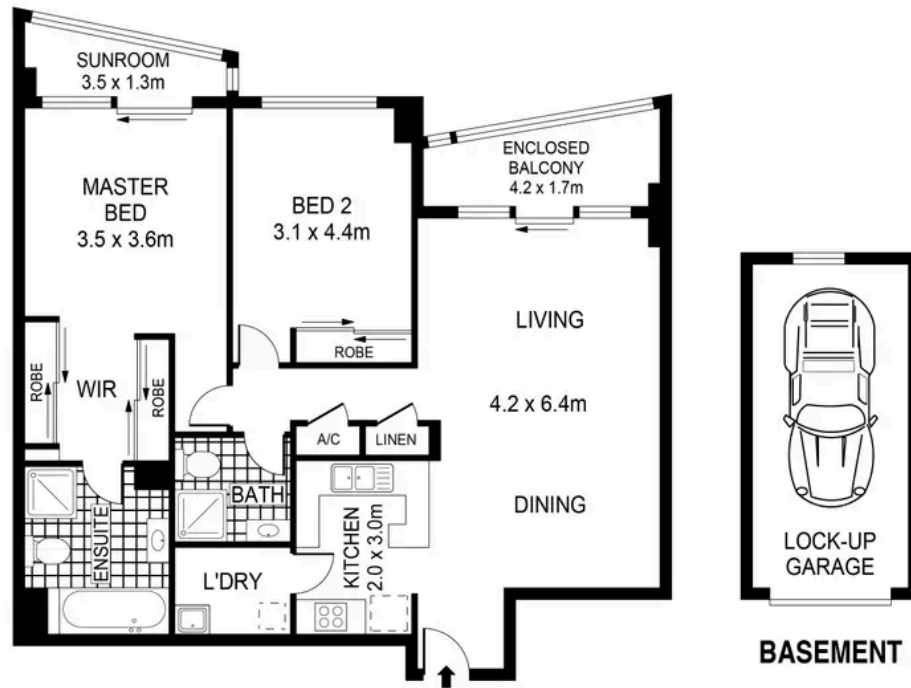


**Idyllic Lifestyle Sanctuary With Serene  
Golf Course Views**

268/83-93 Dalmeny Avenue, Rosebery

2 bed 2 bath 1 car

**Sold**



LEVEL FIVE

0 1 2 3 4 5 SCALE (METRES)

PLANS SHOWN ONLY INDICATIVE OF LAYOUT. DIMENSIONS ARE APPROXIMATE.  
Ref. No: 84292



268/83-93 DALMENY AVENUE

ROSEBERY



Max Klimenko 0425 336 555  
max.klimenko@raywhite.com

**Disclaimer:** All information provided is sourced from what we believe to be reliable sources. However, we do not guarantee its accuracy, and interested parties should conduct their own enquiries. Scale in metres. Indicative only. Dimensions are approximate.