

# RayWhite®

TOUMA TAYLOR



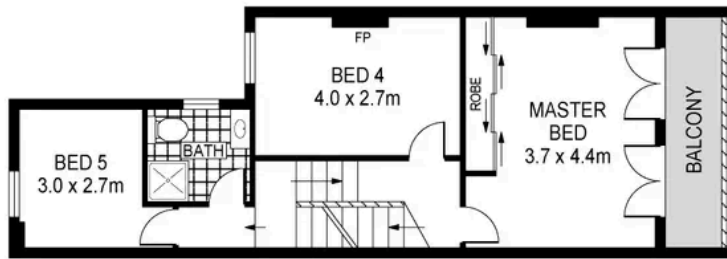
**Tri-level terrace of space & quality in  
sought-after street**

27 Belmore Street, Surry Hills

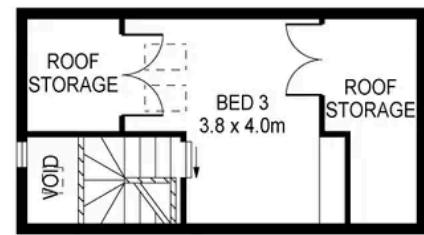
5 bed 2 bath 1 car

**Sold**

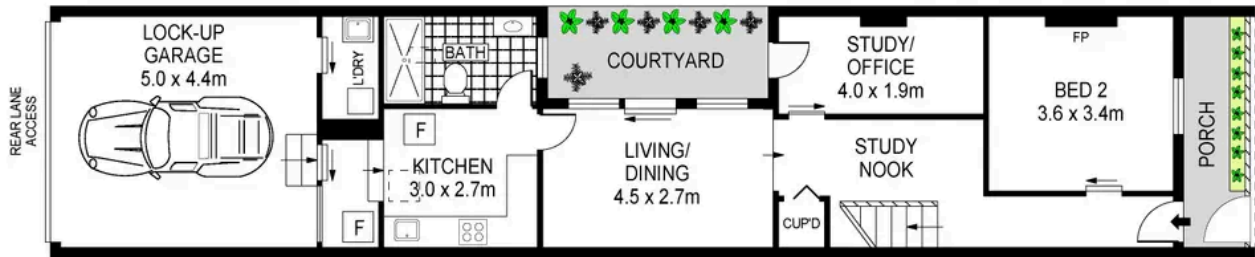




FIRST FLOOR



TOP FLOOR



GROUND FLOOR



PLANS SHOWN ONLY INDICATIVE OF LAYOUT. DIMENSIONS ARE APPROXIMATE.  
Ref. No: 92885

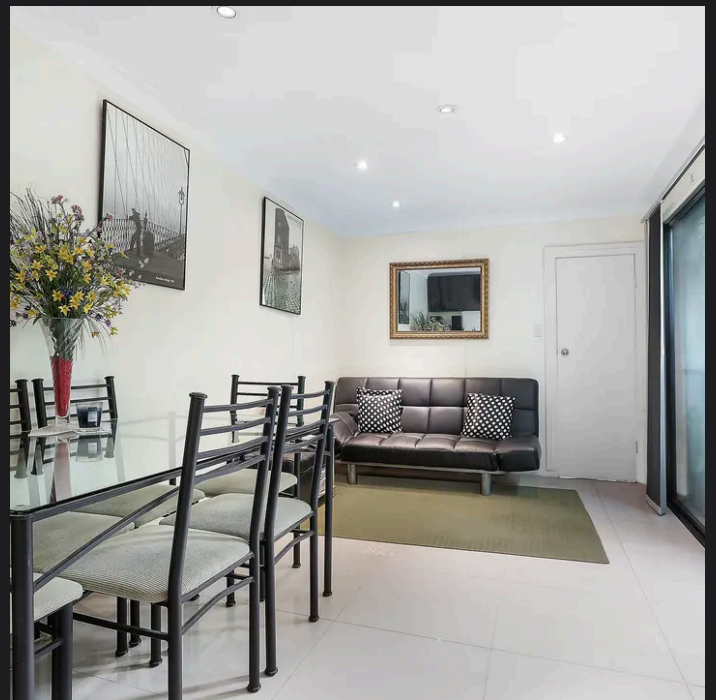
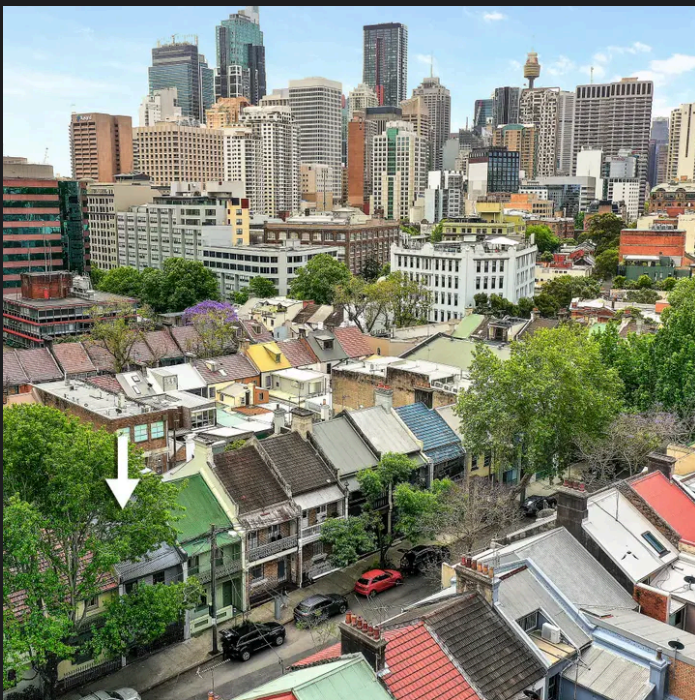


INT: 176SQM  
LAND: 134SQM



27 BELMORE STREET

SURRY HILLS



**Charles Touma 0425 305 455**  
charles.touma@raywhite.com

**Cadan Hickey 0404 206 240**  
cadan\_hickey@raywhite.com

**Disclaimer:** All information provided is sourced from what we believe to be reliable sources. However, we do not guarantee its accuracy, and interested parties should conduct their own enquiries. Scale in metres. Indicative only. Dimensions are approximate.