

RayWhite[®]

TOUMA TAYLOR



Sold off market

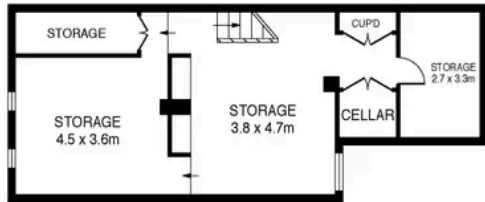
27 Young Street, Redfern

4 bed 2 bath 1 car

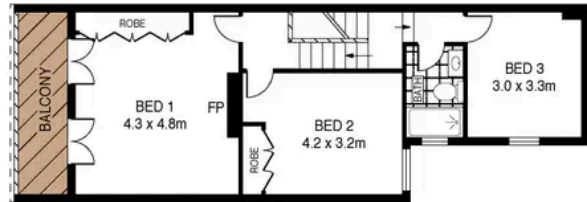
Sold



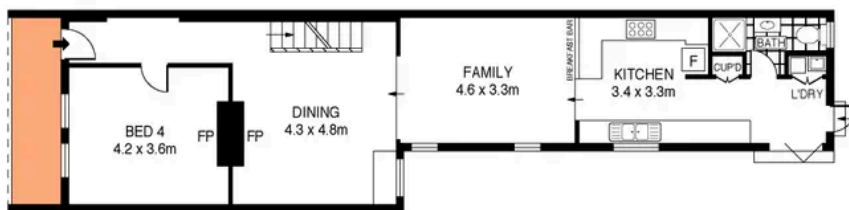
SITE PLAN
(NOT TO SCALE)



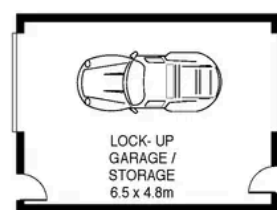
LOWER GROUND LEVEL



LEVEL ONE



GROUND LEVEL



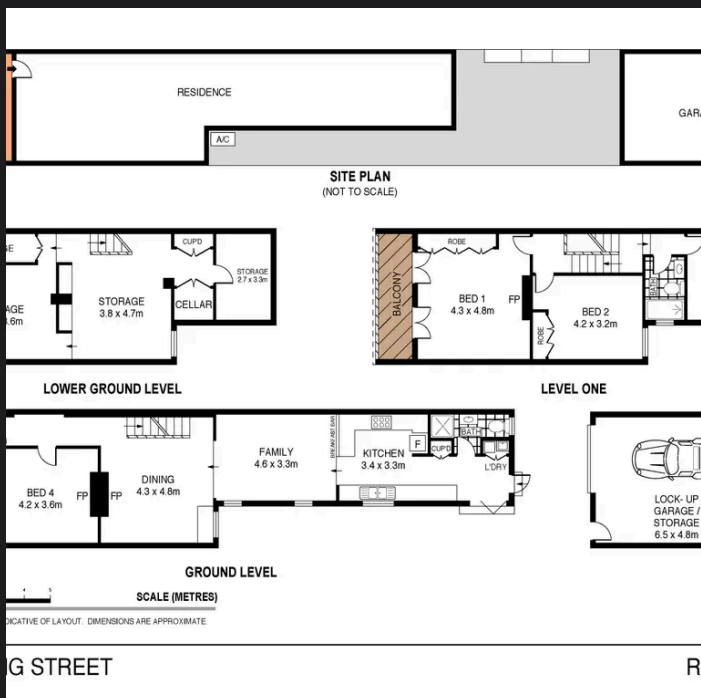
0 1 2 3 4 5
SCALE (METRES)

PLANS SHOWN ONLY INDICATIVE OF LAYOUT. DIMENSIONS ARE APPROXIMATE.
Ref. No: 93000



27 YOUNG STREET

REDFERN



Charles Tuma 0425 305 455
charles.tuma@raywhite.com

Cadan Hickey 0404 206 240
cadan_hickey@raywhite.com

Disclaimer: All information provided is sourced from what we believe to be reliable sources. However, we do not guarantee its accuracy, and interested parties should conduct their own enquiries. Scale in metres. Indicative only. Dimensions are approximate.