

RayWhite®

TOUMA TAYLOR



**Brilliant two-level haven footsteps from
King Street**

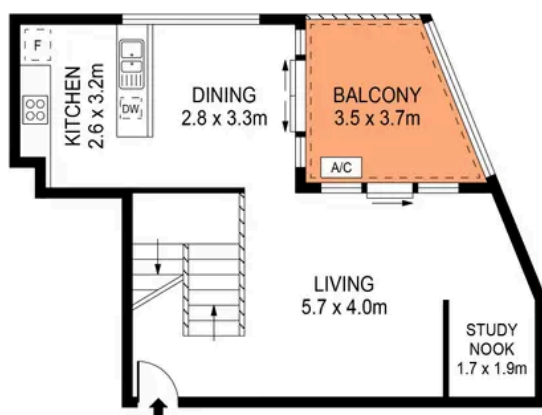
27/1 Goodsell Street, St Peters

2 bed 2 bath 1 car

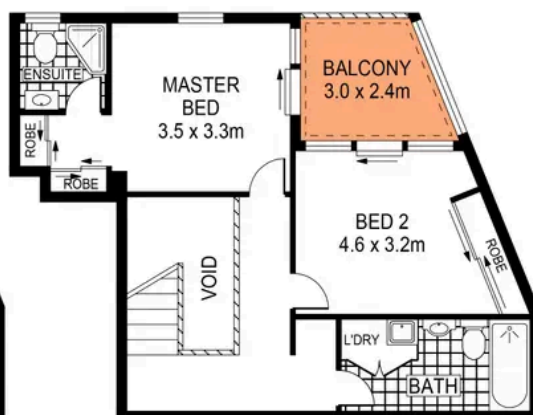
Sold



BASEMENT



LEVEL TWO



UPPER LEVEL



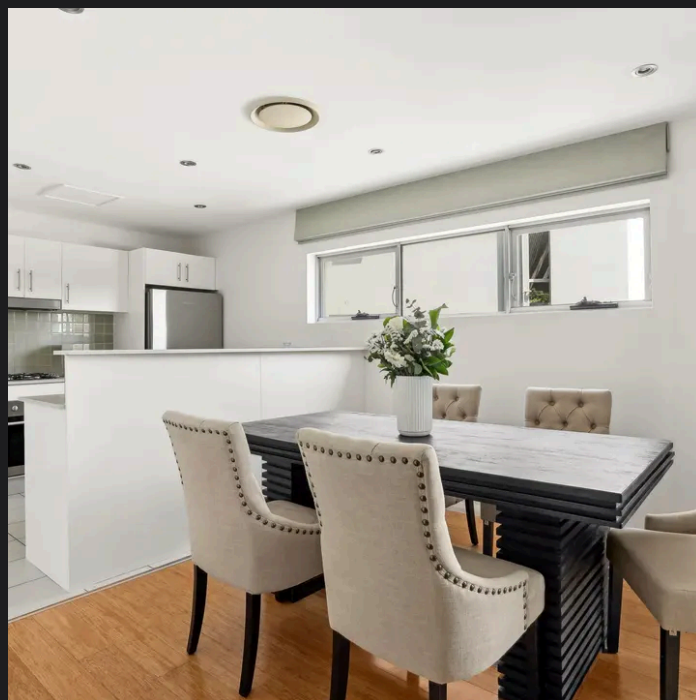
PLANS SHOWN ONLY INDICATIVE OF LAYOUT. DIMENSIONS ARE APPROXIMATE.
Ref. No: 02537



APPROX. TOTAL AREA : 134sqm

27/1 GOODSSELL STREET

ST PETERS



Hayden Richards 0414 872 784
hayden.richards@raywhite.com

Disclaimer: All information provided is sourced from what we believe to be reliable sources. However, we do not guarantee its accuracy, and interested parties should conduct their own enquiries. Scale in metres. Indicative only. Dimensions are approximate.