

RayWhite®

TOUMA TAYLOR

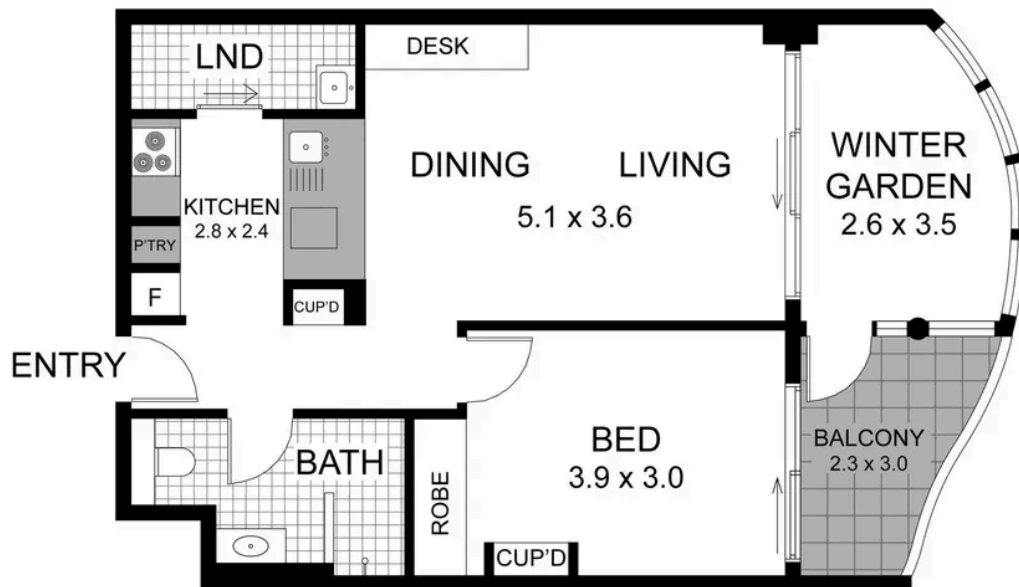


Stylish & spacious parkside living

27/168-172 Goulburn Street, Surry Hills

1 bed 1 bath

Sold



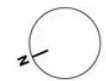
**LEVEL
TEN**

0 1 2 3 4

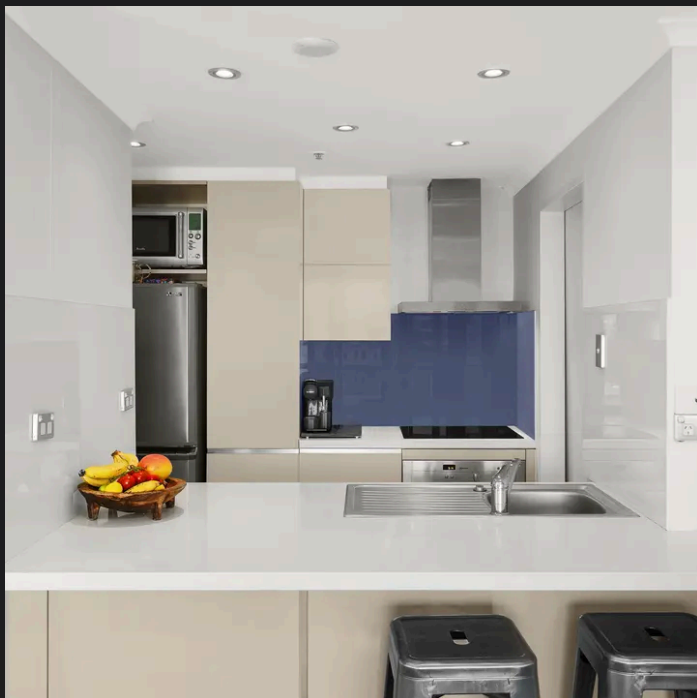
**27/168-172 GOULBURN STREET
SURRY HILLS**

1 Bedroom, 1 Bathroom

Internal area (approx.) 62sqm
Total area (approx.) 68sqm



PLEASE NOTE: WHILST RAY WHITE TAKES EVERY CARE IN THE PURSUIT OF ACCURACY, THE PLAN IS SHOWN FOR GENERAL GUIDANCE ONLY. ALL AREAS, MEASUREMENTS AND DISTANCES ARE APPROXIMATE AND NOT TO SCALE. RAY WHITE / ND OUR VENDOR WILL ACCEPT NO RESPONSIBILITY FOR ITS ACCURACY. INTERESTED PARTIES ARE ADVISED TO MAKE THEIR OWN INDEPENDENT ENQUIRIES.



Walter Burfitt-Williams 0402 833 566
walter.bw@raywhite.com

Dalton Stewart 0458 668 119
dalton.stewart@raywhite.com

Disclaimer: All information provided is sourced from what we believe to be reliable sources. However, we do not guarantee its accuracy, and interested parties should conduct their own enquiries. Scale in metres. Indicative only. Dimensions are approximate.