

RayWhite®

TOUMA TAYLOR

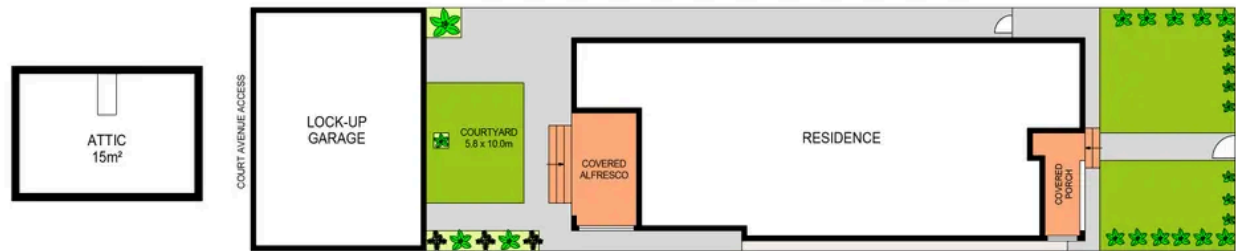


**Freestanding Full-brick Family Home in
Premier Tree-lined Avenue**

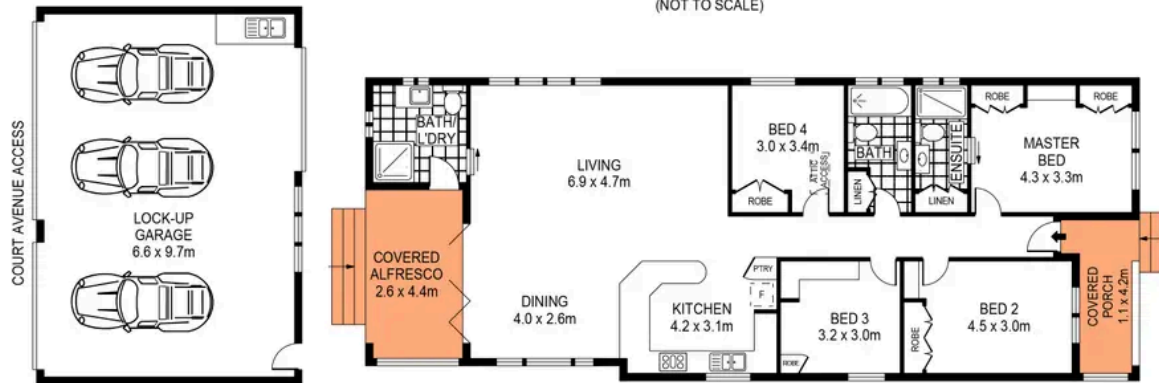
273 Doncaster Avenue, Kingsford

4 bed 3 bath 3 car

Sold



SITE PLAN
(NOT TO SCALE)



SCALE (METRES)

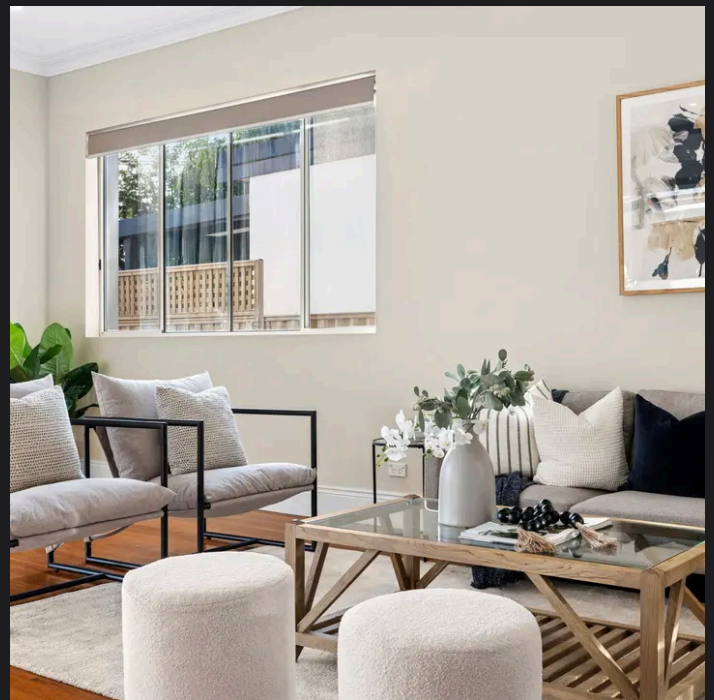
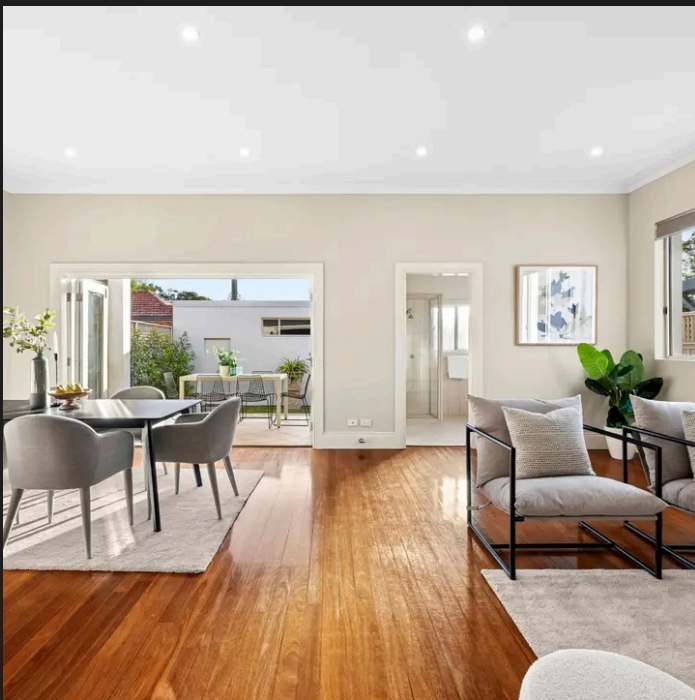
PLANS SHOWN ONLY INDICATIVE OF LAYOUT. DIMENSIONS ARE APPROXIMATE.
Ref. No. 05522

INTERNAL SIZE APPROX : 149m²
LAND SIZE APPROX : 405m²



273 DONCASTER AVENUE

KINGSFORD



Roger Wardy 0481 355 493
roger.wardy@raywhite.com

Ferhat Akin 0410 232 871
ferhat.akin@raywhite.com

Disclaimer: All information provided is sourced from what we believe to be reliable sources. However, we do not guarantee its accuracy, and interested parties should conduct their own enquiries. Scale in metres. Indicative only. Dimensions are approximate.