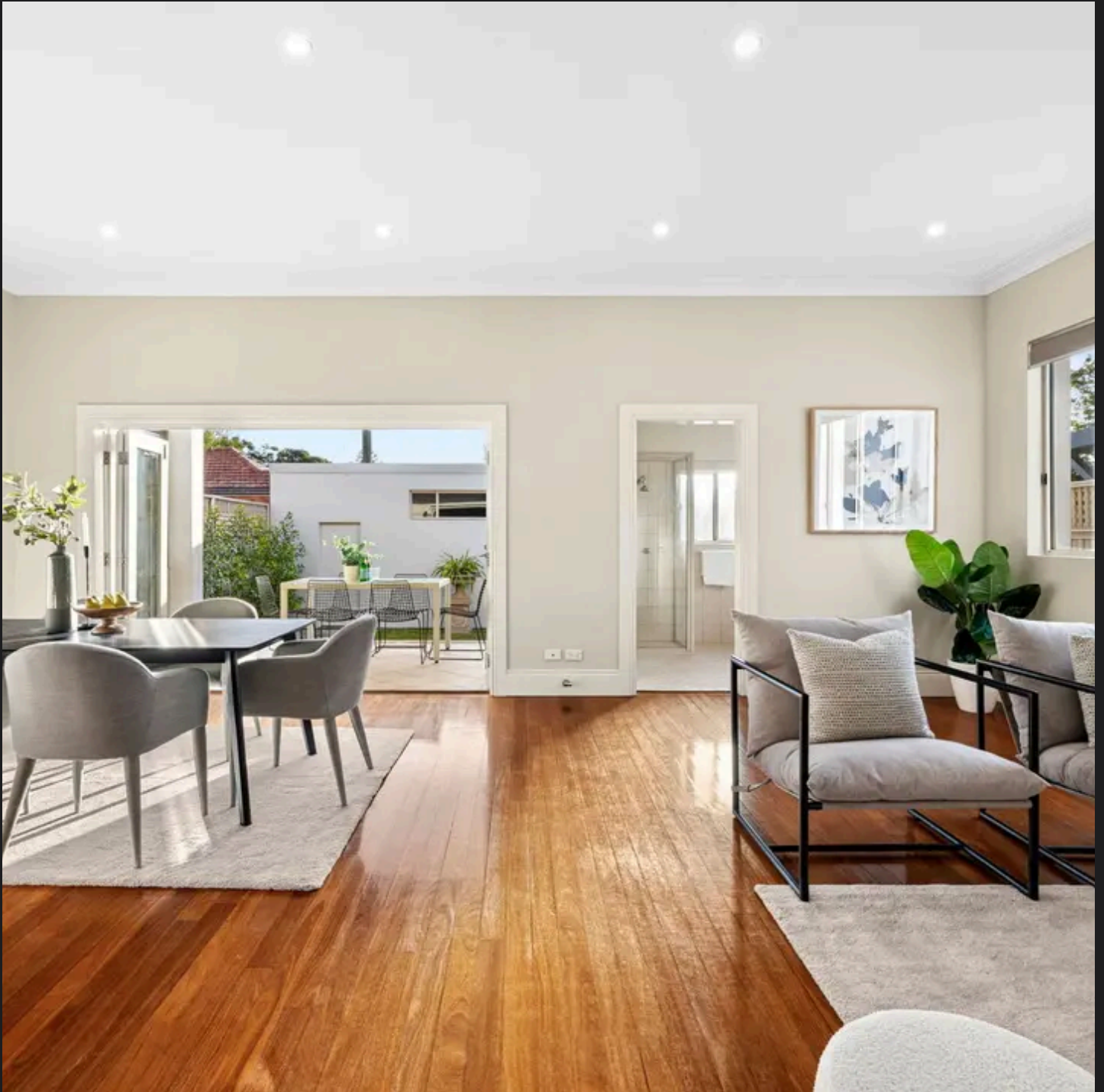


RayWhite®

TOUMA TAYLOR



**Freestanding Full-Brick Home in
Prestigious Tree-Lined Avenue**

273 Doncaster Avenue, Kingsford

4 bed 3 bath 3 car



Disclaimer: All information provided is sourced from what we believe to be reliable sources. However, we do not guarantee its accuracy, and interested parties should conduct their own enquiries. Scale in metres. Indicative only. Dimensions are approximate.



Roger Wardy 0481 355 493
roger.wardy@raywhite.com

Ferhat Akin 0410 232 871
ferhat.akin@raywhite.com