

RayWhite®

TOUMA TAYLOR

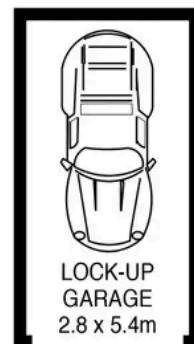
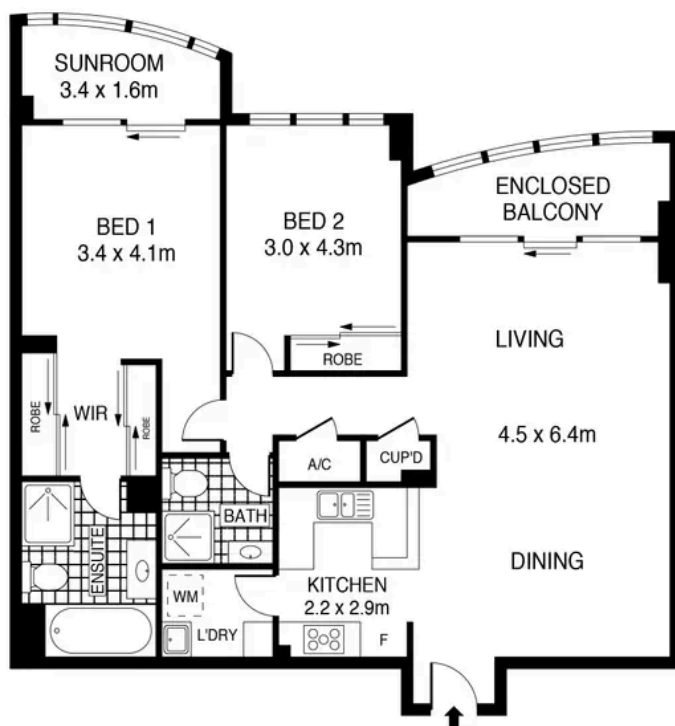


**Secluded Urban Haven with Leisure
Facilities**

276/83-93 Dalmeny Avenue, Rosebery

2 bed 2 bath 1 car

Sold



LEVEL ONE



LEVEL TWO

0 1 2 3 4 5 SCALE (METRES)

LEVEL 6

PLANS SHOWN ONLY INDICATIVE OF LAYOUT. DIMENSIONS ARE APPROXIMATE.
Ref. No: 106237



276/83 DALMENY AVENUE

ROSEBERY



Max Klimenko 0425 336 555
max.klimenko@raywhite.com

Disclaimer: All information provided is sourced from what we believe to be reliable sources. However, we do not guarantee its accuracy, and interested parties should conduct their own enquiries. Scale in metres. Indicative only. Dimensions are approximate.