

RayWhite®

TOUMA TAYLOR

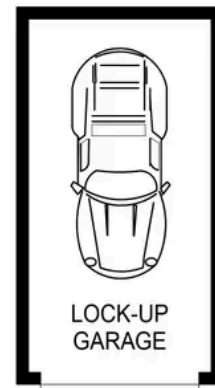
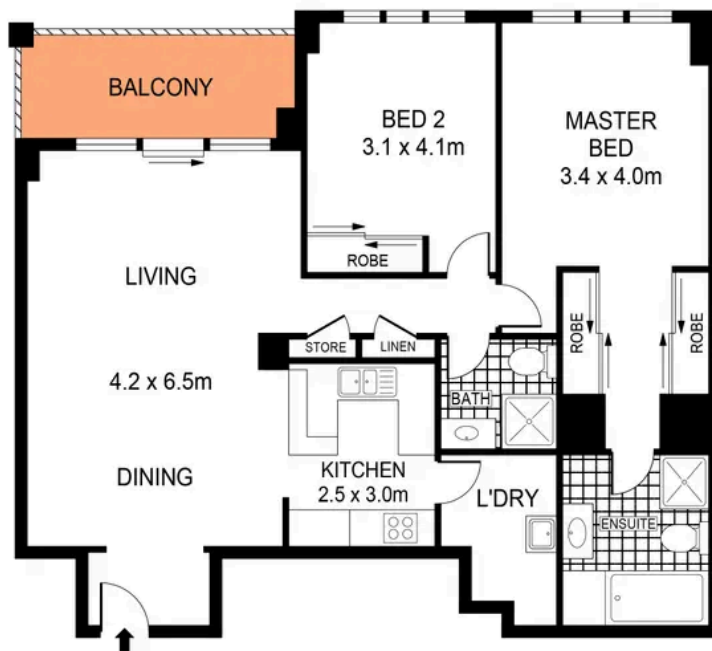


**Quiet Haven Accessing Resort-Style
Facilities**

279/83-93 Dalmeny Avenue, Rosebery

2 bed 2 bath 1 car

Sold



GROUND LEVEL

LEVEL SIX

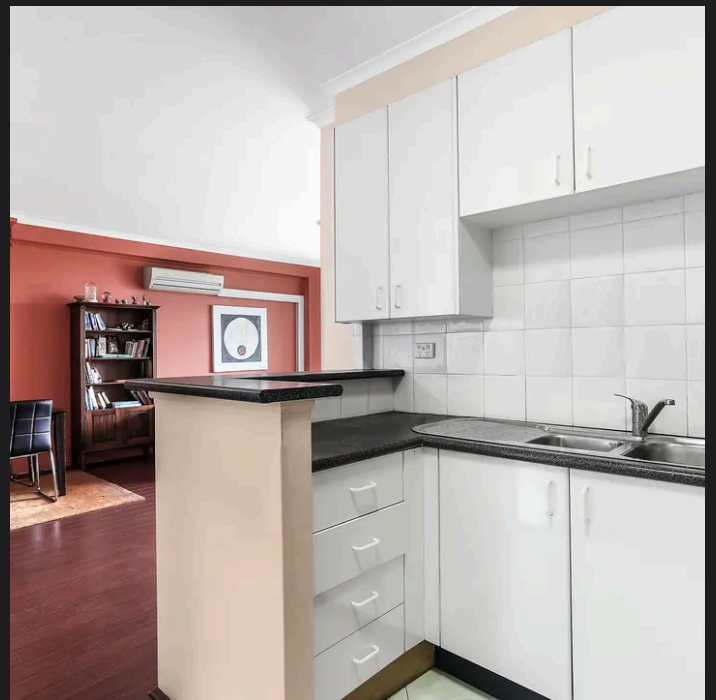
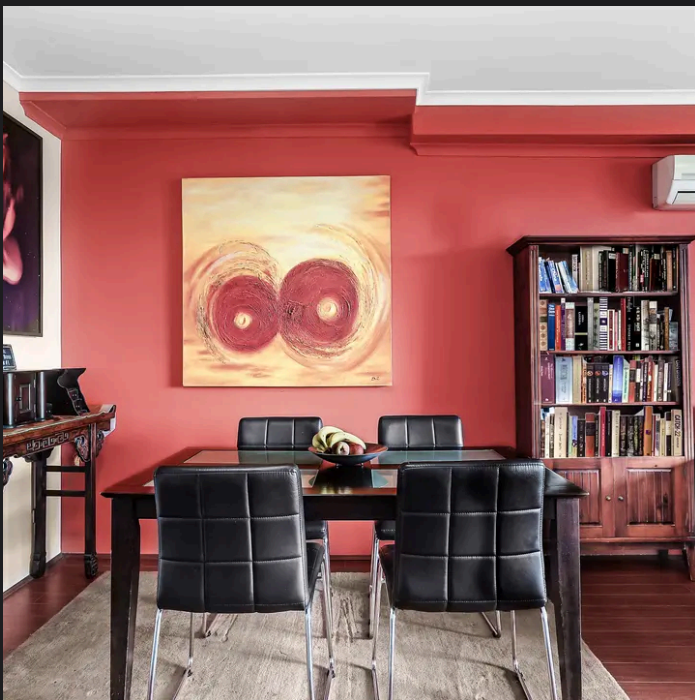


PLANS SHOWN ONLY INDICATIVE OF LAYOUT. DIMENSIONS ARE APPROXIMATE.
Ref. No: 88204



279/83 DALMENY AVENUE

ROSEBERY



Max Klimenko 0425 336 555
max.klimenko@raywhite.com

Disclaimer: All information provided is sourced from what we believe to be reliable sources. However, we do not guarantee its accuracy, and interested parties should conduct their own enquiries. Scale in metres. Indicative only. Dimensions are approximate.