

RayWhite[®]

TOUMA TAYLOR



**A Meticulously Crafted Masterpiece By
Joanna Lukaszewicz Architects**

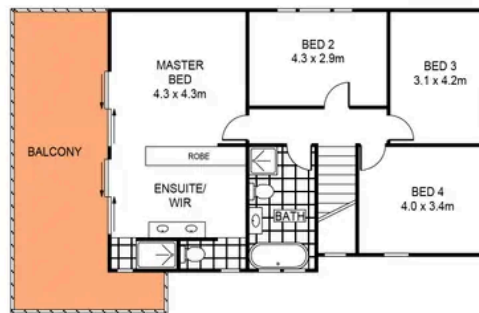
28 Wallace Street, Kingsford

5 bed 4 bath 2 car

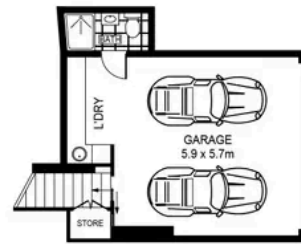
Sold



GROUND FLOOR



FIRST FLOOR



LOWER GROUND FLOOR



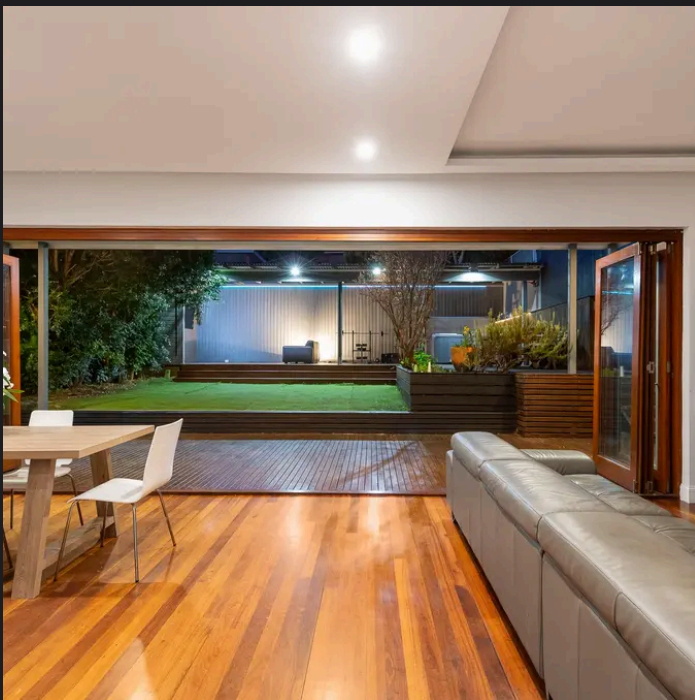
SCALE (METRES)

PLANS SHOWN ONLY INDICATIVE OF LAYOUT. DIMENSIONS ARE APPROXIMATE.
Ref. No: 106982



28 WALLACE STREET

KINGSFORD



Roger Wardy 0481 355 493
roger.wardy@raywhite.com

Disclaimer: All information provided is sourced from what we believe to be reliable sources. However, we do not guarantee its accuracy, and interested parties should conduct their own enquiries. Scale in metres. Indicative only. Dimensions are approximate.