

# **RayWhite®**

TOUMA TAYLOR

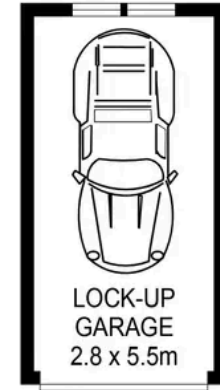
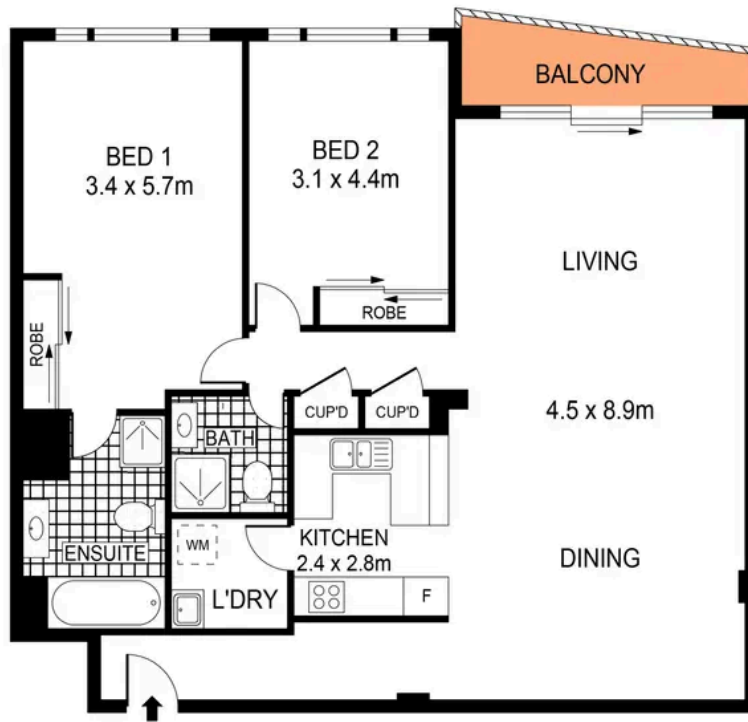


**Stylish Modern Retreat With Resort  
Facilities**

284/83-93 Dalmeny Avenue, Rosebery

2 bed 2 bath 1 car

**Sold**



## LEVEL EIGHT

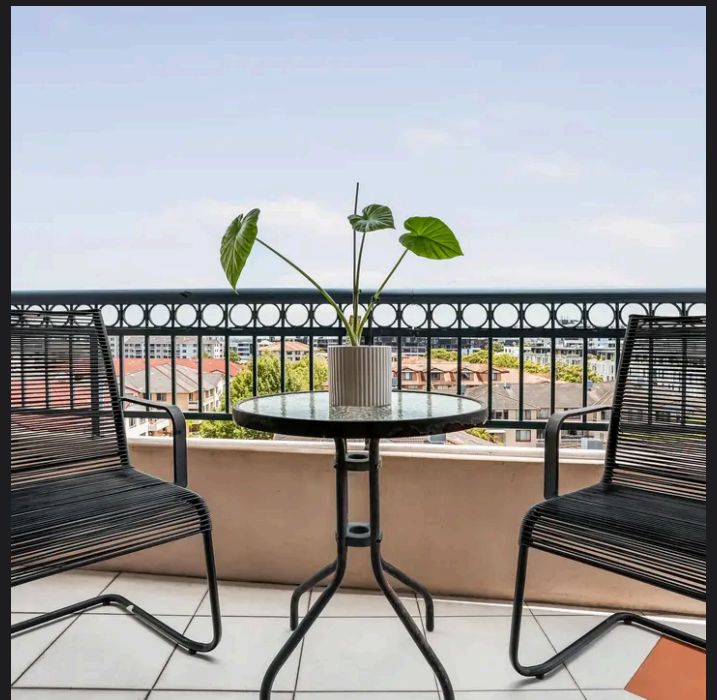
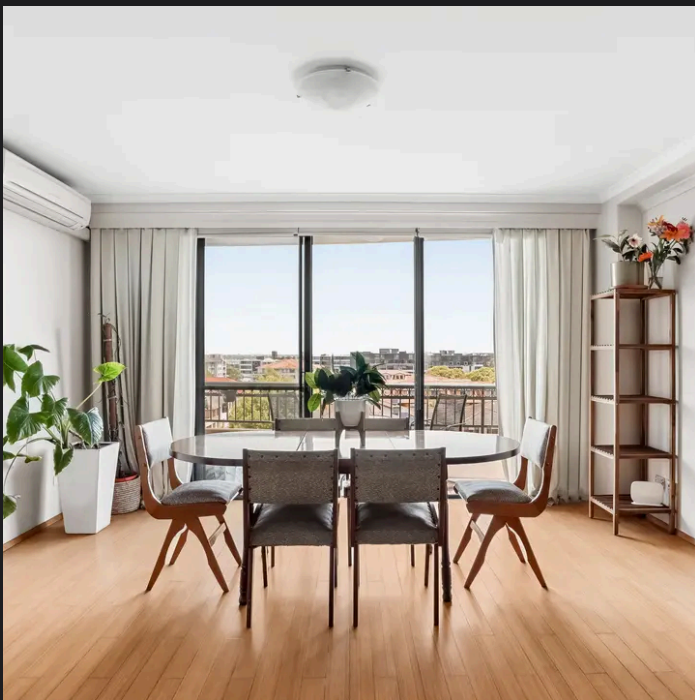


PLANS SHOWN ONLY INDICATIVE OF LAYOUT. DIMENSIONS ARE APPROXIMATE.  
Ref. No: 107602



284/83-93 DALMENY AVENUE

ROSEBERY



**Max Klimenko 0425 336 555**  
max.klimenko@raywhite.com

**Disclaimer:** All information provided is sourced from what we believe to be reliable sources. However, we do not guarantee its accuracy, and interested parties should conduct their own enquiries. Scale in metres. Indicative only. Dimensions are approximate.