

RayWhite®

TOUMA TAYLOR

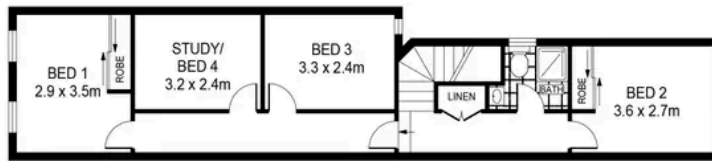


**Contemporary Mixed-Use Property with
Prized Lock-Up Garage**

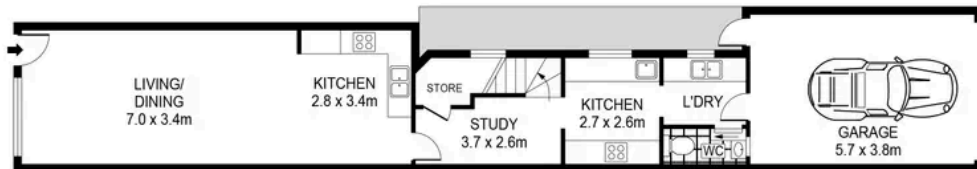
29A Albion Street, Surry Hills

4 bed 1 bath 1 car

Sold



FIRST FLOOR



GROUND FLOOR

0 1 2 3 4 5
SCALE (METRES)

PLANS SHOWN ONLY INDICATIVE OF LAYOUT. DIMENSIONS ARE APPROXIMATE.
Ref. No: 94771

INT : 134m²



29A ALBION STREET

SURRY HILLS



Con Fotaras 0411 648 458
con.fotaras@raywhite.com

Cadan Hickey 0404 206 240
cadan_hickey@raywhite.com

Disclaimer: All information provided is sourced from what we believe to be reliable sources. However, we do not guarantee its accuracy, and interested parties should conduct their own enquiries. Scale in metres. Indicative only. Dimensions are approximate.