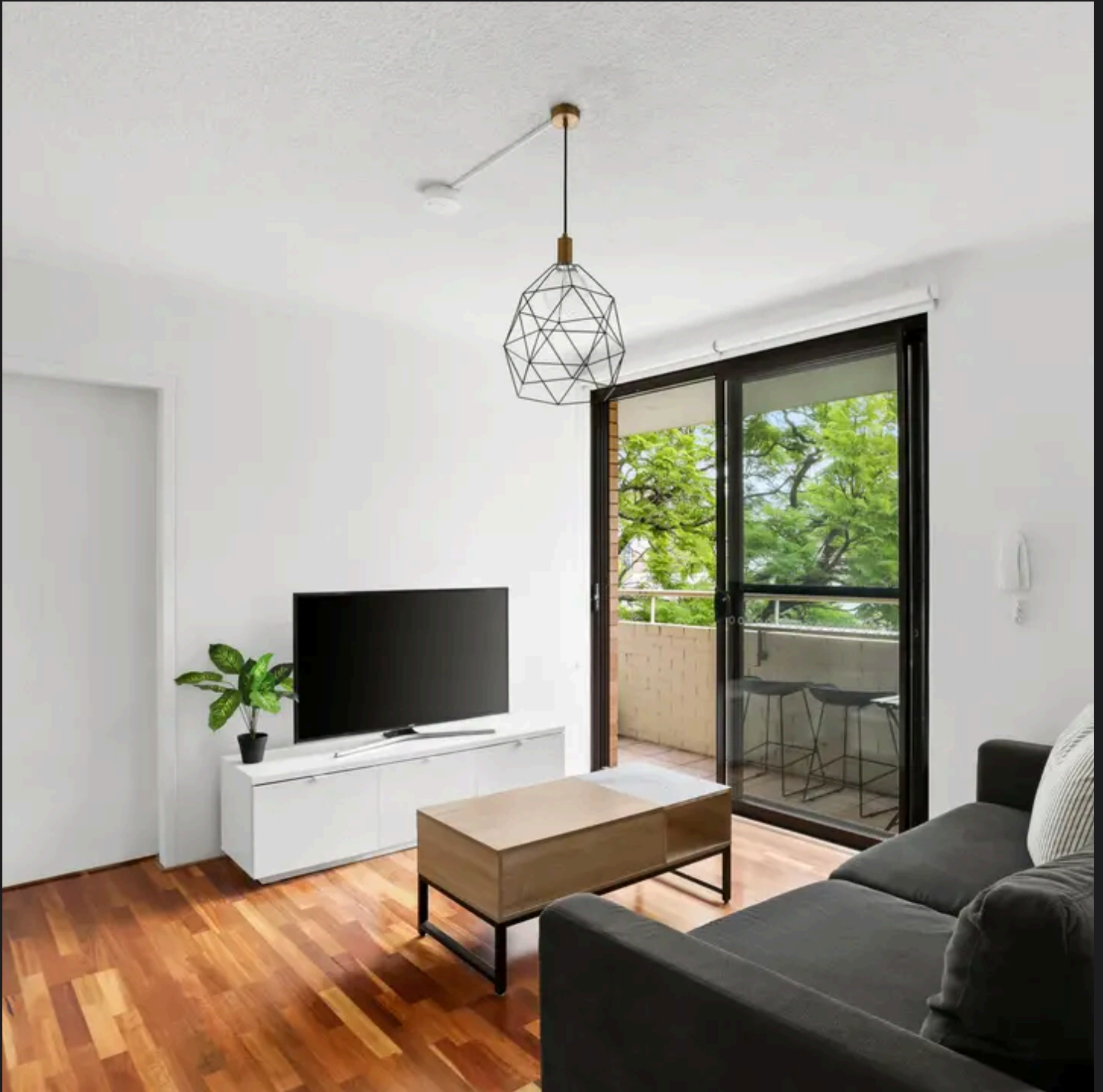


RayWhite®

TOUMA TAYLOR

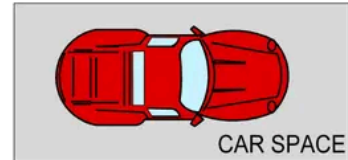
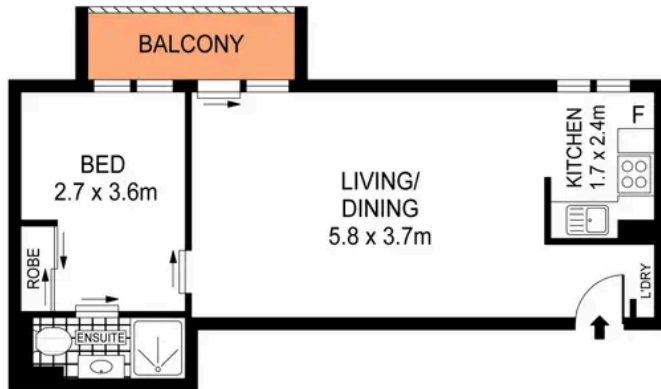


**Low Maintenance Lifestyle Pad in The
Vibrant Heart of Surry Hills**

2D/12 Arthur Street, Surry Hills

1 bed 1 bath 1 car

Sold



0 1 2 3 4 5
SCALE (METRES)

PLANS SHOWN ONLY INDICATIVE OF LAYOUT. DIMENSIONS ARE APPROXIMATE.
Ref. No. 103416

APPROX. TOTAL SIZE: 58m²



2D/12 ARTHUR STREET

SURRY HILLS



Hayden Richards 0414 872 784
hayden.richards@raywhite.com

Disclaimer: All information provided is sourced from what we believe to be reliable sources. However, we do not guarantee its accuracy, and interested parties should conduct their own enquiries. Scale in metres. Indicative only. Dimensions are approximate.