

RayWhite®

TOUMA TAYLOR

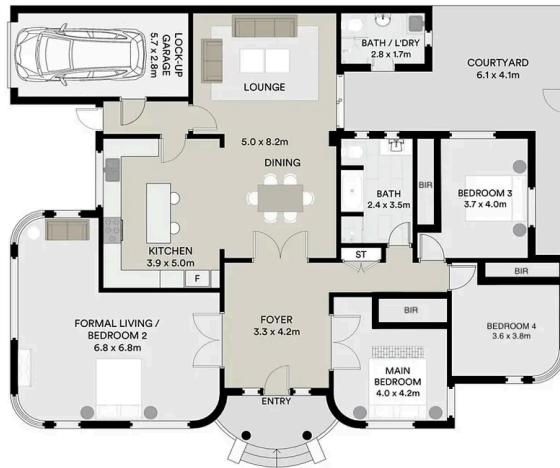
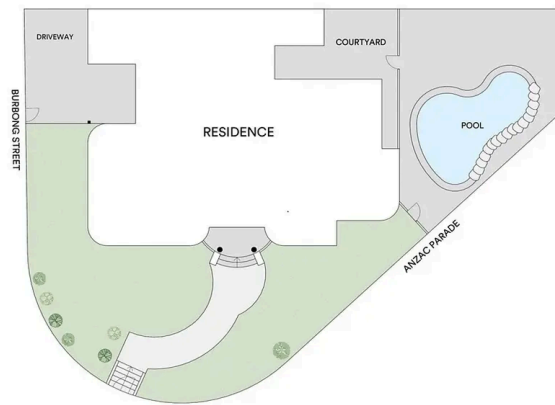


**Charming Family Home with Modern
Updates and Prime Location**

3 Burbong Street, Kingsford

4 bed 2 bath 2 car

Sold



All information contained in this document is from sources we believe to be accurate, however we cannot guarantee its accuracy. Interested persons should make and rely on their own enquiries in relation to measurements, dimensions, layout, furniture and descriptions.



Roger Wardy 0481 355 493
roger.wardy@raywhite.com

Jesse Petersen 0404197940
jesse.petersen@raywhite.com

Disclaimer: All information provided is sourced from what we believe to be reliable sources. However, we do not guarantee its accuracy, and interested parties should conduct their own enquiries. Scale in metres. Indicative only. Dimensions are approximate.