

RayWhite[®]

TOUMA TAYLOR

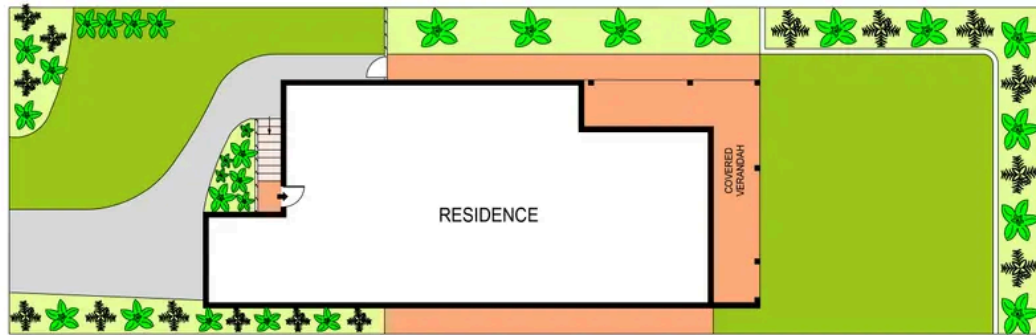


Tranquil Family Living With Golf Course Views

3 Cowper Avenue, Pagewood

3 bed 2 bath 2 car

Sold



SITE PLAN
(NOT TO SCALE)



SCALE (METRES)

PLANS SHOWN ONLY INDICATIVE OF LAYOUT. DIMENSIONS ARE APPROXIMATE.
Ref. No: 107880



3 COWPER AVENUE

PAGEWOOD



Roger Wardy 0481 355 493
roger.wardy@raywhite.com

Disclaimer: All information provided is sourced from what we believe to be reliable sources. However, we do not guarantee its accuracy, and interested parties should conduct their own enquiries. Scale in metres. Indicative only. Dimensions are approximate.