

# **RayWhite**<sup>®</sup>

TOUMA TAYLOR

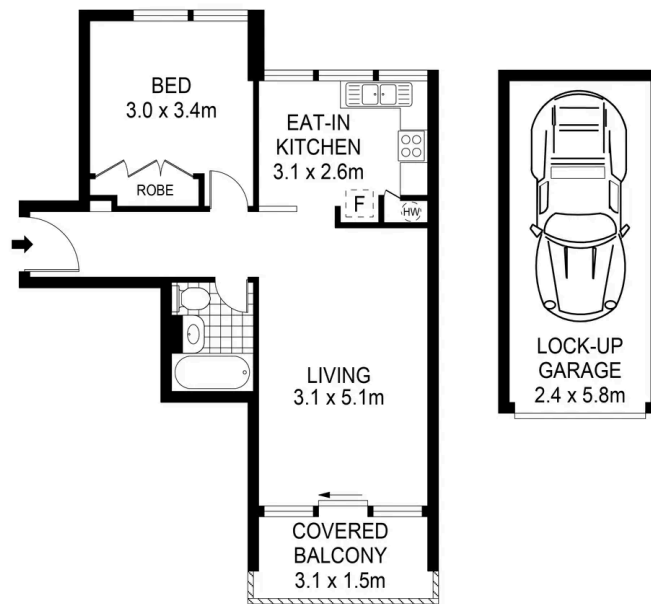


**Lifestyle sanctuary in landmark 'Bayview'  
building**

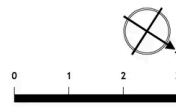
30/41-49 Roslyn Gardens, Elizabeth Bay

1 bed 1 bath 1 car

**Sold**



LEVEL FOUR



Disclaimer: All information provided is sourced from what we believe to be reliable sources. However, we do not guarantee its accuracy, and interested parties should conduct their own enquiries. Scale in metres. Indicative only. Dimensions are approximate.



**Renee Cross 0413 764 566**  
[renee.cross@raywhite.com](mailto:renee.cross@raywhite.com)

**Nickolas Voloshanskyi**  
[nickolas.voloshanskyi@raywhite.com](mailto:nickolas.voloshanskyi@raywhite.com)