

RayWhite®

TOUMA TAYLOR

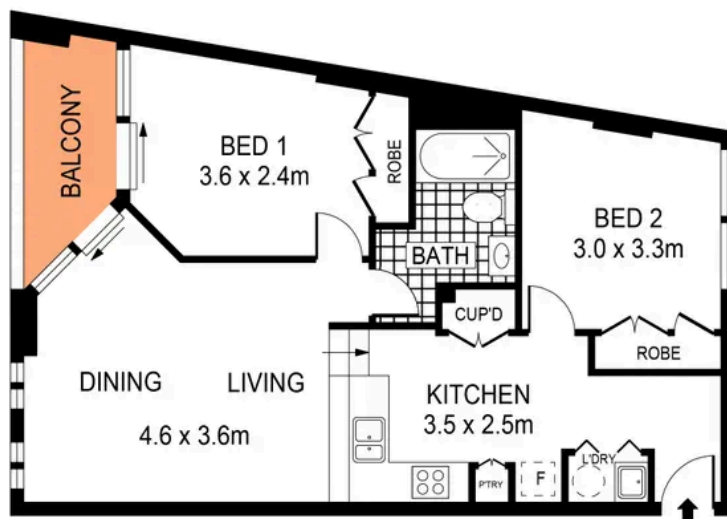
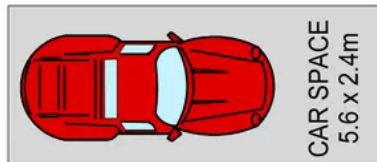


**Light-Soaked Urban Retreat in Warehouse
Conversion Tribeca**

304/82 Abercrombie Street, Chippendale

2 bed 1 bath 1 car

Sold



LEVEL THREE



PLANS SHOWN ONLY INDICATIVE OF LAYOUT. DIMENSIONS ARE APPROXIMATE.
Ref. No: 108509



304/82-84 ABERCROMBIE STREET

CHIPPENDALE



Charles Touma 0425 305 455
charles.touma@raywhite.com

Max Klimenko 0425 336 555
max.klimenko@raywhite.com

Disclaimer: All information provided is sourced from what we believe to be reliable sources. However, we do not guarantee its accuracy, and interested parties should conduct their own enquiries. Scale in metres. Indicative only. Dimensions are approximate.