

RayWhite®

TOUMA TAYLOR

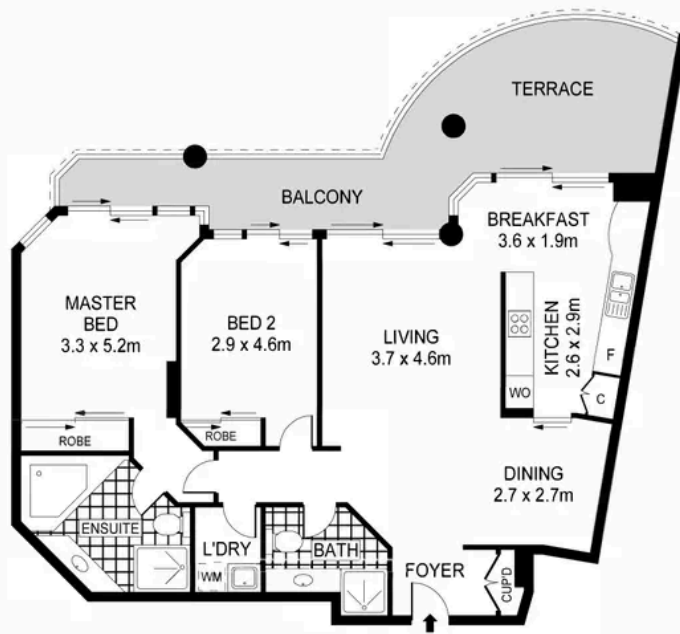


**Expansive North-Facing Apartment in
Prestigious Glen Eagles with Breathtaking
Views**

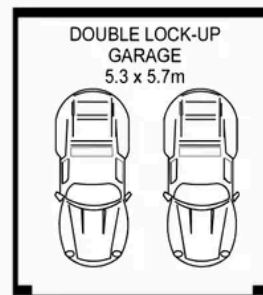
306/93 Brompton Road, Kensington

2 bed 2 bath 2 car

Sold



LEVEL THREE



BASEMENT



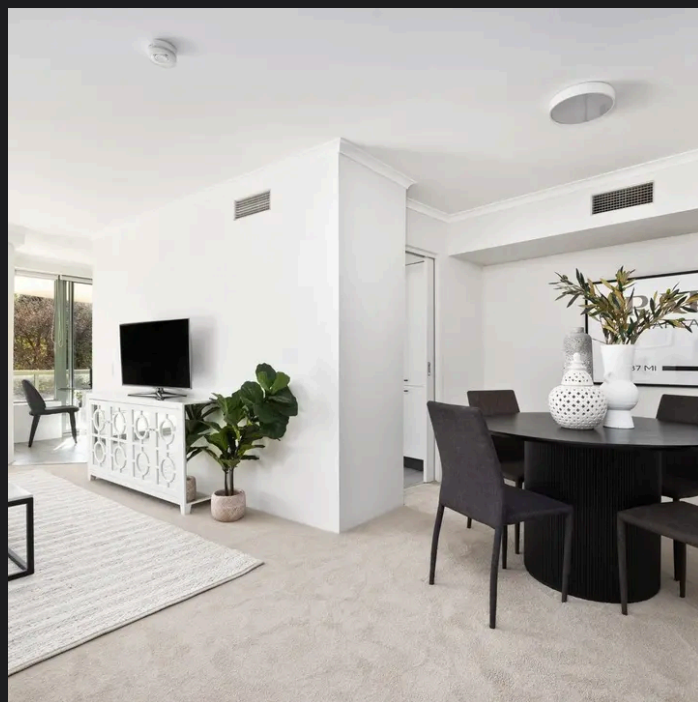
PLANS SHOWN ONLY INDICATIVE OF LAYOUT. DIMENSIONS ARE APPROXIMATE.
Ref. No. 02162

APPROX LOT SIZE : 162m²



306/93 BROMPTON ROAD

KENSINGTON



Roger Wardy 0481 355 493
roger.wardy@raywhite.com

Disclaimer: All information provided is sourced from what we believe to be reliable sources. However, we do not guarantee its accuracy, and interested parties should conduct their own enquiries. Scale in metres. Indicative only. Dimensions are approximate.