

RayWhite®

TOUMA TAYLOR

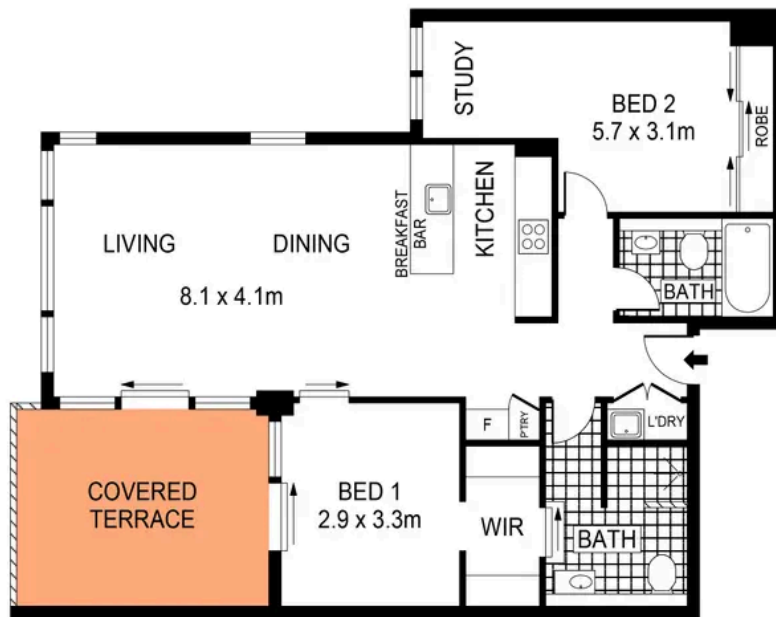


Property Sold - Open Home Cancelled

309/95 Dalmeny Avenue, Rosebery

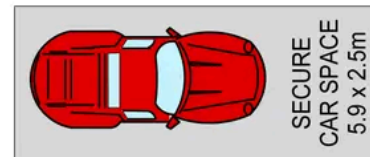
2 bed 2 bath 1 car

Sold



STORAGE
CAGE
1.9 x 1.1m

BASEMENT



LEVEL THREE

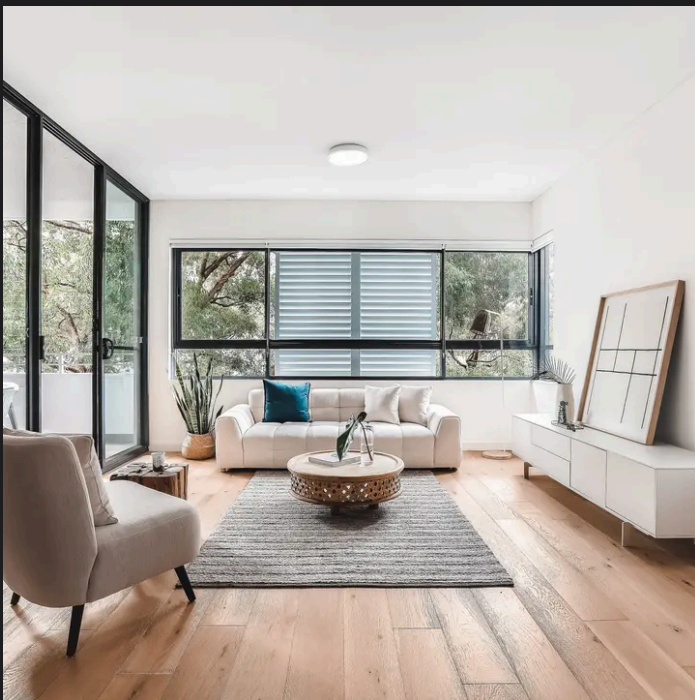
0 1 2 3 4 5
SCALE (METRES)

PLANS SHOWN ONLY INDICATIVE OF LAYOUT. DIMENSIONS ARE APPROXIMATE.
Ref. No: 97096



309/95 DALMENY AVENUE

ROSEBERY



Max Klimenko 0425 336 555
max.klimenko@raywhite.com

Disclaimer: All information provided is sourced from what we believe to be reliable sources. However, we do not guarantee its accuracy, and interested parties should conduct their own enquiries. Scale in metres. Indicative only. Dimensions are approximate.