

RayWhite®

TOUMA TAYLOR

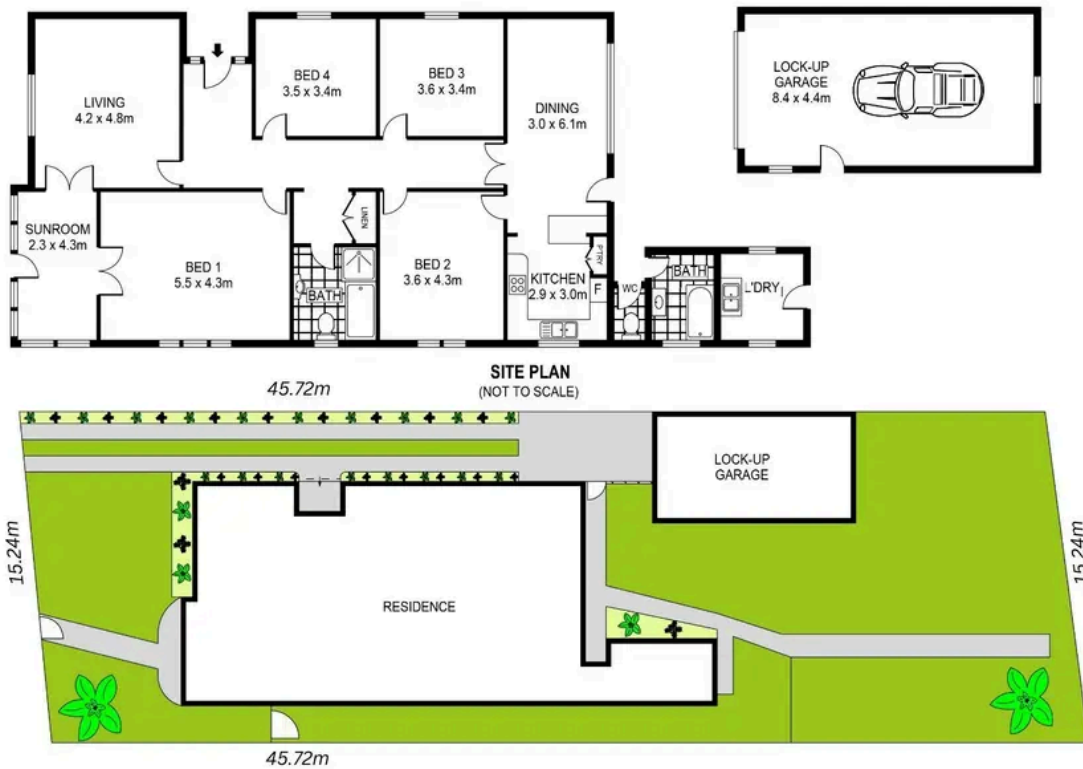


**Timeless Californian Bungalow Situated on
an Expansive Parcel of Land - 15.24m
Frontage**

31 Dalmeny Avenue, Rosebery

4 bed 2 bath 3 car

Sold



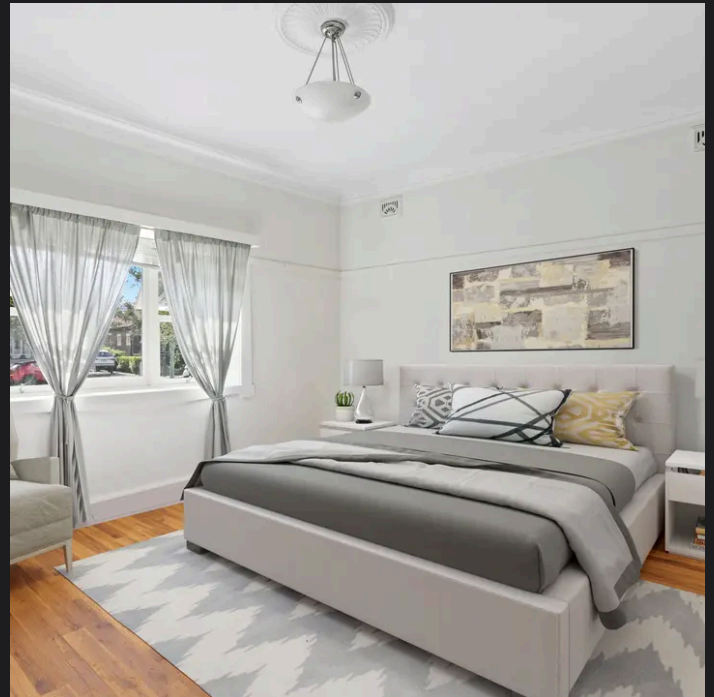
SCALE (METRES)

PLANS SHOWN ONLY INDICATIVE OF LAYOUT. DIMENSIONS ARE APPROXIMATE.
Ref. No: 106497



31 DALMENY AVENUE

ROSEBERY



Roger Wardy 0481 355 493
roger.wardy@raywhite.com

Disclaimer: All information provided is sourced from what we believe to be reliable sources. However, we do not guarantee its accuracy, and interested parties should conduct their own enquiries. Scale in metres. Indicative only. Dimensions are approximate.