

RayWhite®

TOUMA TAYLOR

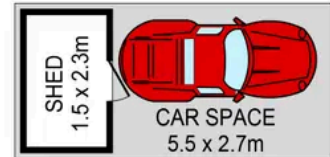
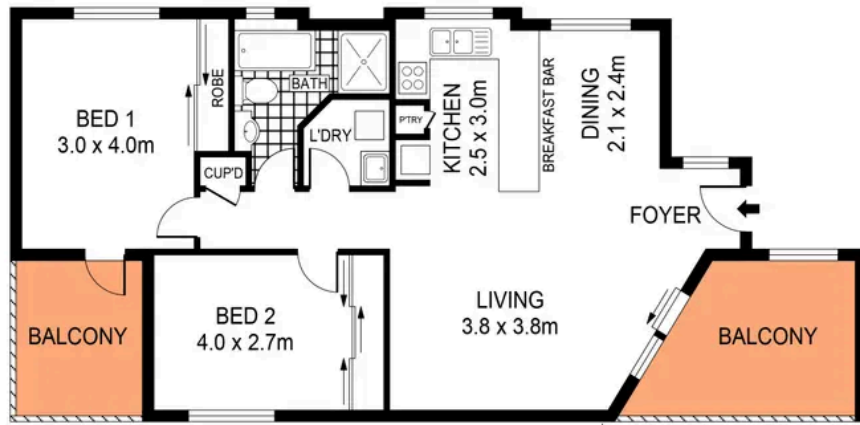


**Sun Filled Lifestyle Haven In Secure
Boutique Block Of Five**

3/149 Todman Avenue, Kensington

2 bed 1 bath 1 car

Sold



0 1 2 3 4 5 SCALE (METRES)

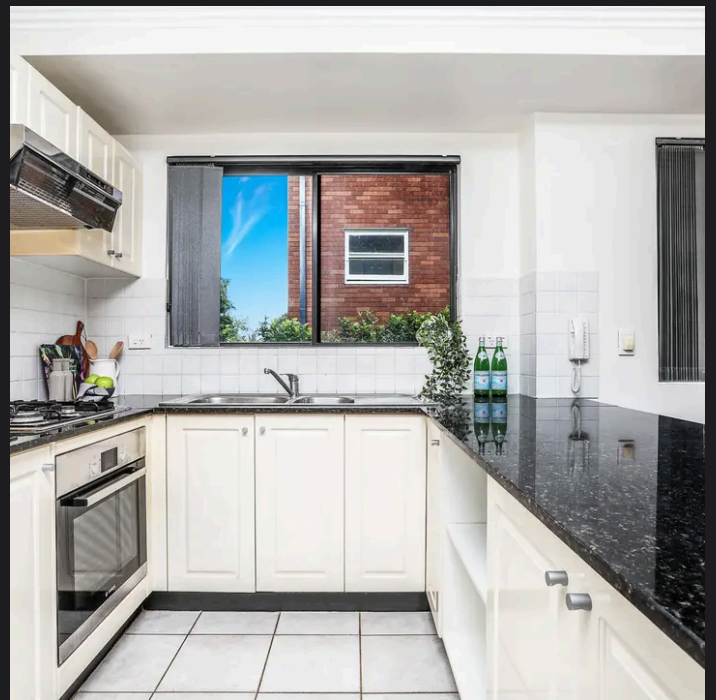
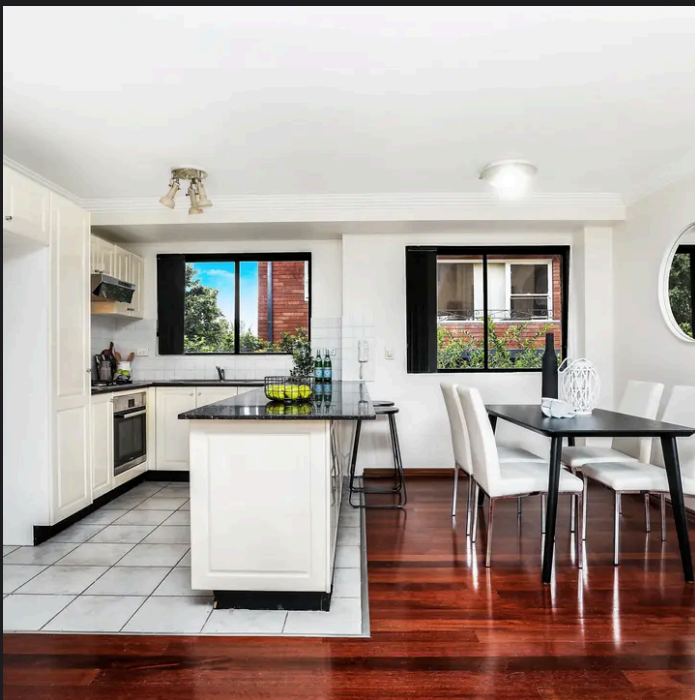
PLANS SHOWN ONLY INDICATIVE OF LAYOUT. DIMENSIONS ARE APPROXIMATE.
Ref. No: 85248



INT: 92m2
EXT: 16m2

3/149 TODMAN AVENUE

KENSINGTON



Roger Wardy 0481 355 493
roger.wardy@raywhite.com

Disclaimer: All information provided is sourced from what we believe to be reliable sources. However, we do not guarantee its accuracy, and interested parties should conduct their own enquiries. Scale in metres. Indicative only. Dimensions are approximate.