

RayWhite®

TOUMA TAYLOR

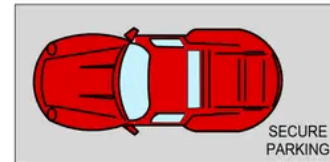
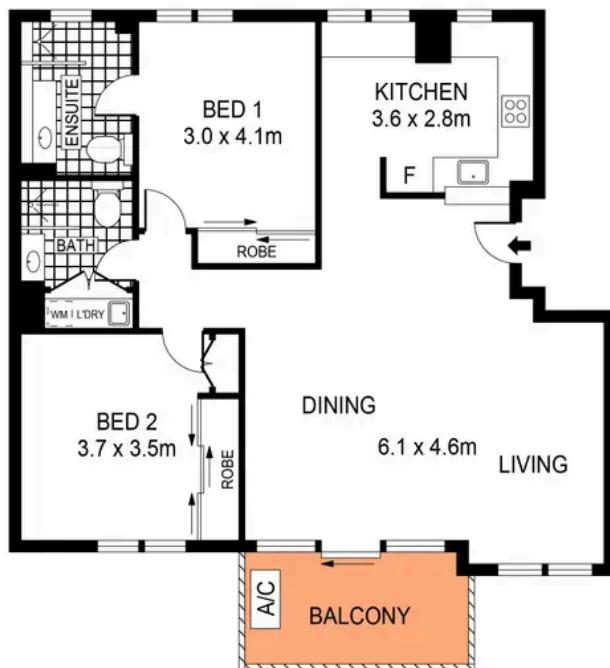


**City Sanctuary Enhanced with Meticulous
Upgrades**

3/15 Little Bourke Street, Surry Hills

2 bed 2 bath 1 car

Sold



0 1 2 3 4 5
SCALE (METRES)

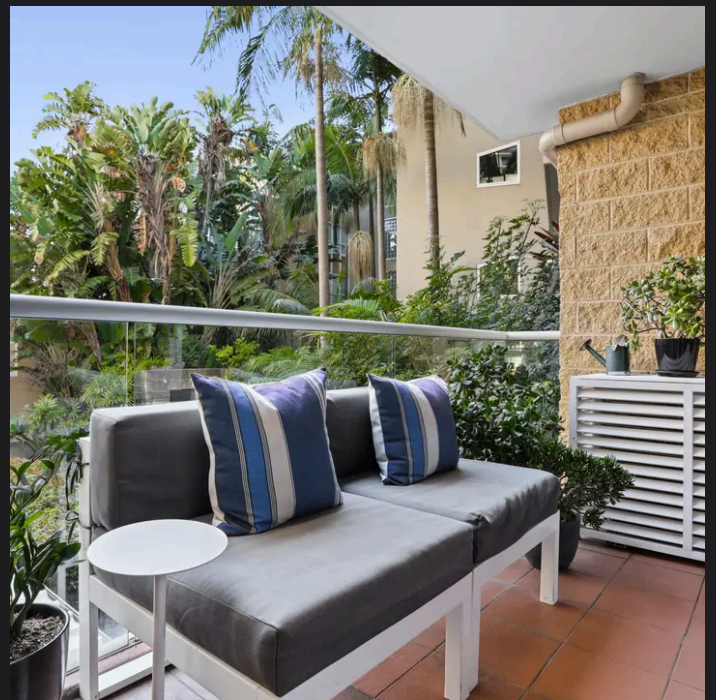
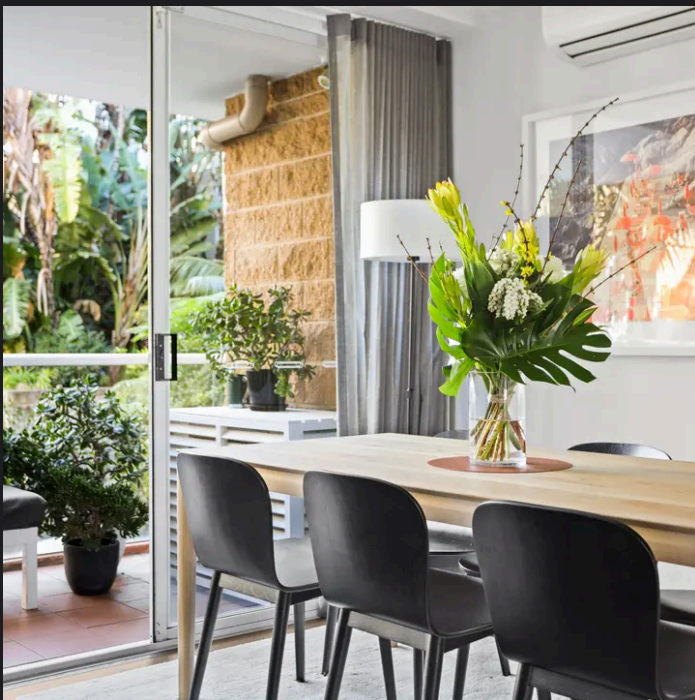
PLANS SHOWN ONLY INDICATIVE OF LAYOUT. DIMENSIONS ARE APPROXIMATE.
Ref. No: 105462

APPROX. INTERNAL AREA : 81m²
APPROX. EXTERNAL AREA : 7m²



3/15 LITTLE BOURKE STREET

SURRY HILLS



Charles Touma 0425 305 455
charles.touma@raywhite.com

Cadan Hickey 0404 206 240
cadan_hickey@raywhite.com

Disclaimer: All information provided is sourced from what we believe to be reliable sources. However, we do not guarantee its accuracy, and interested parties should conduct their own enquiries. Scale in metres. Indicative only. Dimensions are approximate.